



## **Pueblo de San Ildefonso Bulletin**

**April 2025**

### **Inside this Issue**

- Facilities Department
- Employment Opportunities
- Office of Project Management
- Transfer Station News
- DECP News
- Tewa Language Program
- Botany Immersion Program
- Office of Natural Resources Updates
- HHS Updates
- Senior Center
- Education Department
- San Ildefonso Pueblo Head Start
- Tribal Courts Information
- Black Mesa Behavioral Health
- San Ildefonso Services, LLC
- Spring Bazaar



### **Contact Us:**

2 Tunyo Po, Santa Fe, NM 87506  
Phone: (505) 455-2273  
Fax: (505) 455-7351

### **Working Session Dates**

Thursday, April 3, 2025 at 5:10 pm

Thursday, April 24, 2025 at 5:10 pm

### **Council Meeting Dates**

Thursday, April 10, 2025 at 5:10pm

Dates and time are subject to change.

Unless otherwise noted, all Council Sessions and Council meetings are open for enrolled Tribal Member participation.

### **Community Notifications**

Reminder that we have a Community Notification system where we send out important updates, event reminders, closures, etc. If you would like to sign up, call the Tribal Administrative Office at (505)455-2273.

If you are already signed up and you have changed your number, please let the office know so that we can remove the old number from the list and update your current number.

Remember to check your voicemails for missed messages

### **Speeding**

With the weather warming up outside, please remember that our community members are out on our walkways and yards. Please be mindful of their safety and follow all speed limits.

### **Wellness Center**

More information on the progress of the Wellness Center will be sent out in the coming weeks. Check email or phone notifications and our Facebook page for announcements.



# Facilities Department

## Important Notice to Our Community: Proper Waste Disposal for the New Septic System

To ensure our new septic system operates efficiently and safely, we kindly ask all community members to avoid disposing of the following items:

**Please DO NOT dispose of the following in the septic system:**

- **Grease** (cooking oils, fats)
- **Feminine Products** (tampons, pads, etc.)
- **Cleaning/Toxic Chemicals** (bleach, drain cleaners, etc.)
- **Trash** (paper towels, diapers, etc.)
- **Food Waste** (leftovers, scraps)
- **Medication** (pills, ointments)
- **Plastics** (bottles, bags, etc.)
- **Needles** (sharps)
- **Cigarette Butts**
- **Hair** (from combing, shaving, etc.)

**We have come across some items that can seriously damage our system.** Additionally, we've noticed that **thick toilet paper**, such as Charmin, is too thick and has been getting stuck in the system. To help prevent blockages and ensure smooth operation, we kindly ask the community to **please consider switching to thinner or biodegradable toilet paper.**

Some options for Biodegradable toilet paper:

- Scott, Scott dissolving
- Seventh Generation
- Bamboo Toilet Paper

These actions will help prevent clogs, damage, and costly repairs, ensuring that our septic system continues to work properly for years to come.

**Thank you for your cooperation!**



# Vacancy Announcement

**Excellent Career and Benefits Opportunities**

**Come and Join our Team!**

Full Time Positions offers a wide range of excellent fringe benefits:

- Healthcare (medical, dental, vision)
- Annual Leave
- Sick Leave
- Paid Holidays
- Basic Life Insurance
- Short Term, Long Term, AD&D Insurances
- On-the-job training and skills development
- Employee Assistance Program
- 401K

**Pueblo de San Ildefonso is seeking qualified applicants for the below positions. All positions are open until filled**

**Tribal Ranger (Full-Time) Open Until Filled**

**Summer Education Enhancement Program Aide (Part-Time)**

**Deadline 05/23/25**

**Summer Education Enhancement Program Coor.(Part-Time)**

**Deadline 05/23/25**

**Human Resources Manager (Full-Time) Open Until Filled**

**Driver for Senior Outings (As needed)**

**Contact Human Resources at (505)-455-4155 or (505) 455-4112 for Job Description or for more information. Employment Applications are available on the website at [www.sanipueblo.org/jobs](http://www.sanipueblo.org/jobs)**



# Pueblo de San Ildefonso Office of Project Management



## From Start



## TRIBAL ADMINISTRATION BUILDING PROJECT

### Pueblo de San Ildefonso, NM

Accounting Department – Renovation / Office Furniture

The recently renovated Accounting Room was completed March 2025 after the installation of new Workstations.

Spears Horn Architects was hired to design new flooring, lighting, wall materials and office Furniture at the Tribal Administration Building.

Missing Link Construction finalized construction before Creative Interiors installed the Workstations in March. Work began in January 2025.

The project is comprised of new color coordinated Work Stations by Teknion, new Laminate Wood Flooring, New Linear LED lights, new Outlets and Switches, and new Paint.

Spears Horn Architects worked closely With Accounting Staff to determine the materials, furniture, and equipment.

We are working on upgrading the Realty - Natural Resources Department, GIS Department and HR Department in the Tribal Administration Building.

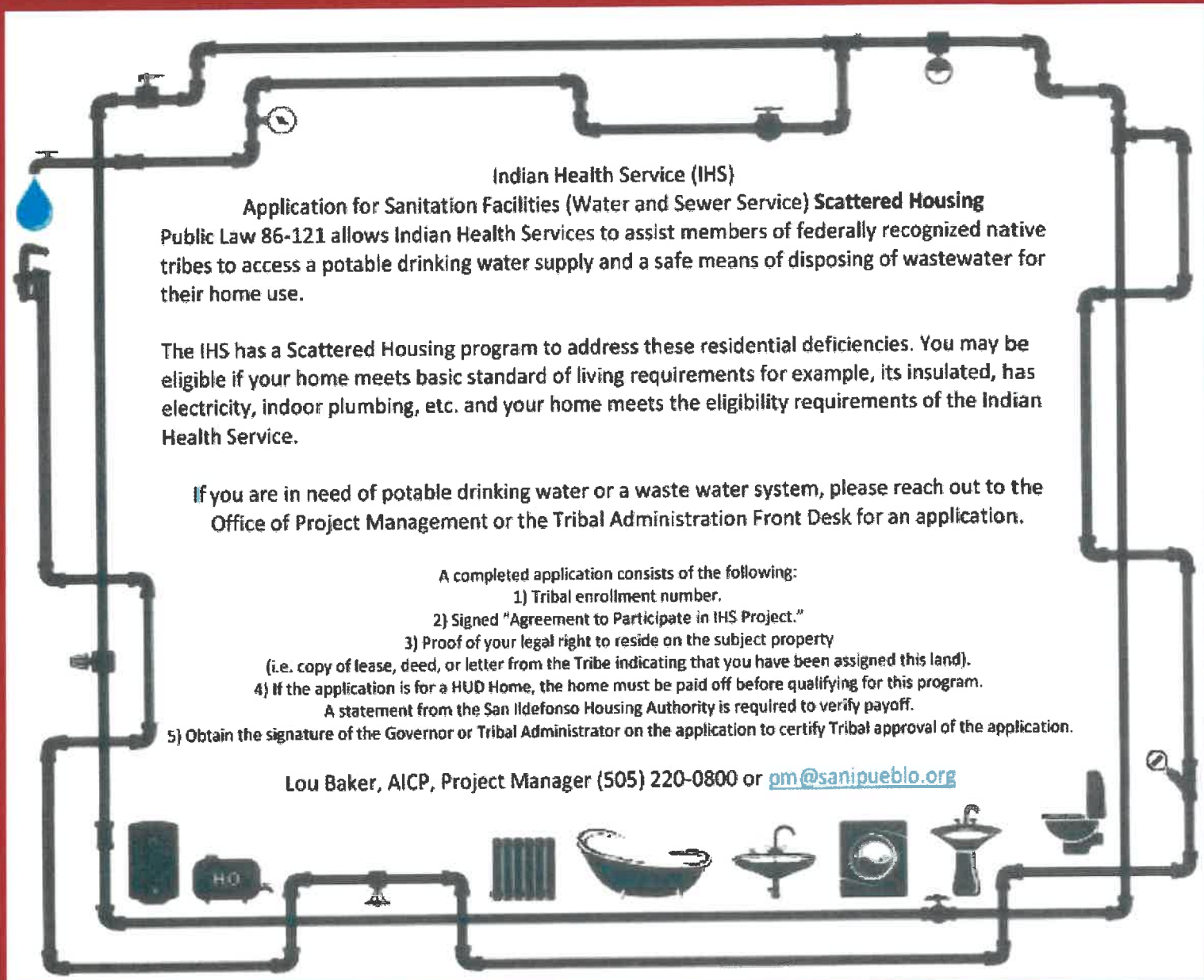


## To Finish





# Pueblo de San Ildefonso Office of Project Management



## Indian Health Service (IHS)

**Application for Sanitation Facilities (Water and Sewer Service) Scattered Housing**  
Public Law 86-121 allows Indian Health Services to assist members of federally recognized native tribes to access a potable drinking water supply and a safe means of disposing of wastewater for their home use.

The IHS has a Scattered Housing program to address these residential deficiencies. You may be eligible if your home meets basic standard of living requirements for example, its insulated, has electricity, indoor plumbing, etc. and your home meets the eligibility requirements of the Indian Health Service.

If you are in need of potable drinking water or a waste water system, please reach out to the Office of Project Management or the Tribal Administration Front Desk for an application.

A completed application consists of the following:

- 1) Tribal enrollment number.
- 2) Signed "Agreement to Participate in IHS Project."
- 3) Proof of your legal right to reside on the subject property  
(i.e. copy of lease, deed, or letter from the Tribe indicating that you have been assigned this land).
- 4) If the application is for a HUD Home, the home must be paid off before qualifying for this program.  
A statement from the San Ildefonso Housing Authority is required to verify payoff.
- 5) Obtain the signature of the Governor or Tribal Administrator on the application to certify Tribal approval of the application.

Lou Baker, AICP, Project Manager (505) 220-0800 or [pm@sanipueblo.org](mailto:pm@sanipueblo.org)



# Transfer Station News

\*\*Hours and closures are subject to change for holidays or at any time for many reasons.

## HOURS OF OPERATION:

MONDAY	8:00 am TO 5:00 pm
TUESDAY	8:00 am TO 5:00 pm
WEDNESDAY	8:00 am TO 5:00 pm
<b>THURSDAY</b>	<b>- CLOSED -</b>
FRIDAY	8:00 am TO 5:00 pm
SATURDAY	8:00 am TO 5:00 pm
SUNDAY	8:00 am TO 5:00 pm

**CLOSED 12:00pm to 1:00pm**

## Transfer Station Easter Holiday Scedule

FRI, 4/18	SAT, 4/19	SUN, 4/20	MON, 4/21
<b>OPEN</b> 8am to 5pm Good Friday	<b>OPEN</b>	<b>CLOSED</b> Easter	<b>OPEN</b> 8am to 5pm Regualr schedule & hours resume
<b>CLOSED</b> 12pm to 1pm	<b>CLOSED</b> 12pm to 1pm		<b>CLOSED</b> 12pm to 1pm



### Earth Day

Founded in: 1970

Celebrated: April 22

**Mission:**  
"Diversify, educate  
and activate the  
environmental  
movement  
worldwide"

## 25th Annual Earth Day Festival

Saturday, April 26 | 10 AM - 2 PM

Join PEEC to celebrate Earth Day and 25 YEARS with a FREE fun-filled day of entertainment, activities, and more!

Los Alamos Nature Center, 2600 Canyon Rd.



## Ways to Make Earth Day EVERYDAY!

### REDUCE, REUSE AND RECYCLE

- Reuse or replace containers, clothing and grocery bags
- Give clothes to a second life by donating or buying used
- Get in to recycling. Ask you local programs that collects these items and what items are recyclables.

### FEED PEOPLE, NOT LANFFILLS

- Check your refrigerator, pantry, and freezer before shopping to avoid buying foods you don't need.
- Plan your meals for the week before heading to store
- Properly store fruits and vegetables to last longer
- Befriend your freezer and leftovers

### BE H2O SMART

- Repair leaky facets to prevent water waste and damages
- Turn off water to brush teeth
- Run lull loads of laundry and dishes
- Collect rainwater to use in your gardens

### LOWER YOUR CARBON FOOTPRINT

- Bike or walk. Carpool or take public transpiration
- Make fewer trips by grouping your errands
- Drive smart: go easy on brakes and gas, use cruise control and keep your car well-maintained

### What's Part of Your Carbon Footprint?



## Transfer Station Contacts:

- ⇒ Roberta Trujillo, Transfer Station Attendant
- ⇒ Christopher Chavez, Transfer Station Assistant
- ⇒ Erin Martinez, Transfer Station Supervisor

- (505) 250-8297
- (505) 412-3158
- (505) 455-4121

## TREE & SEED DISTRIBUTION



### Date & Time

April 3, 2025 8am to

### Location

DECP Building

Tree Seedlings and seeds will be available on a **first come, first serve basis** until all distributed.

We recommend planting tree seedling as soon as possible. If you are unable to do so, keep trees in a bucket of water until ready for planting.

### Trees

- Ponderosa
- Aspen
- Osage Orange

### Seeds

- Wildflowers Mix
- Hummingbird & Butterfly Mix
- Wildflower Mix
- Bee Pollen Wildflower



Na'in bin  
ung sha

*The mission of DECP is to preserve and protect the natural environment and the cultural resources of the Pueblo de San Ildefonso, to assess risks to human health and welfare, both quantitatively and qualitatively, and protect the health and welfare of the Tribal community*



### INSIDE THIS ISSUE:

- Tree And Seed Distribution
- *Insights from Roberta Trujillo*

# 'Developing and Operating Small-Scale Solid Waste Transfer Stations on Tribal Lands' Workshop

## *Insights from Roberta Trujillo*

In February, I attended a two-day workshop titled “Developing and Operating Small-Scale Solid Waste Transfer Stations on Tribal Lands.” In Pala, CA, hosted by the Pala Band of Mission Indians, a reservation in northern San Diego County with 918 enrolled members. The purpose of this workshop was to learn the fundamentals and gather information on the foundation of the transfer station operations and planning as well as maintenance assistance, and strategies to enhance tribal facilities.

During the two-day workshop, we visited different transfer station sites. The first stop was the Pala Band Reservation where I was impressed by their transfer station system for the recycling of bottles and cans. Not only do they recycle these items but they also provide compensation for those who recycle them.

We visited two other sites,

which were smaller transfer stations compared to the Pala Band Reservation: the Rincon and La Jolla Band of Luiseño Indians. During our visit at these two locations, they asked us many questions such as: What works for us? What do we do about littering?

I was able to give them some insight on operations and the steps we use to prevent littering including installing cameras at our transfer station, collaborating with the Tribal Rangers and Tribal Courts to identify and address littering issues.

While, all transfer stations are different, one common characteristic we all have in common. Each Transfer station I have visited looks for creative ways to manage how the waste is collect and transfer waste out of our communities. Such a looking for free alternative resources, promote more recycling, and sharing our successes and failures with others.







### Insights from the 'Developing and Operating Small-Scale Solid Waste Transfer Stations on Tribal Lands' Workshop CONTINUED....

One topic of interest, was on disposing lithium batteries. Lithium batteries, specifically known as lithium-ion or Li-ion batteries, are a widely employed type of rechargeable battery that uses lithium to drive core electrochemical reactions. These batteries are distinct from traditional (i.e., disposable) batteries that can't be safely recharged.

Since attending the training, I am working with the fire department to bring awareness of the different kinds of batteries and demonstrate how to dispose of them properly. Be on the lookout for this upcoming community event.

Until then, please read on of the Do's and Don'ts of disposing lithium batteries.

## Practice Proper Disposal of Batteries

**DO NOT THROW YOUR BATTERIES IN THE GARBAGE OR RECYCLING BIN. DO NOT THROW BATTERIES INTO ANY BINS AT THE TRANSFER STATION**  
**Please contact attendant for proper disposal.**



### SAFETY FIRST:

To avoid the risk of fires, you need to tape the terminal on some batteries before you store or recycle them.

- Lithium
- Rechargeable
- 6 Volt
- 9 Volt
- Button Cell

### DISPOSE:

Damaged or just getting rid of, batteries should be disposed in a bucket with sand and taken to the Transfer Station to properly dispose.

### Signs of damaged and defective batteries:

- Corroded
- Swollen
- Burned
- Leaking



Devices that utilizes Lithium batteries



Pueblo de San Ildefonso

02 Tunyo Po

Santa Fe, NM 87506

View the **DECP Newsletter** online at

## DECP STAFF

**Raymond Martinez**  
*Director/Tribal Risk Assessment Program Manager*

**Erin Martinez**  
*Office Administrator*

**Eric Archuleta**  
*Database Manager*

**Darryl Martinez**  
*Water Quality Technician*

**Thomas Martinez**  
*Environmental Field Assistant*

**Neil Weber**  
*Intergovernmental Liaison*

**Kai Fong**  
*Receptionist*

**Roberta Trujillo**  
*Transfer Station Attendant*

**Christopher Chavez**  
*Transfer Station Assistant*



## The Tewa Language Program

There is still room for anyone wishing to learn our Tewa language with Ko'o Dorothy Roybal, Mentor, she has her classes on Monday and Wednesday evenings at 6pm at the DECP Department's Conference Room.

We also have Sedo Daniel Baca, who has classes at the Library/Learning Center on Tuesday's and Wednesday's evenings, also at 6pm.

Please come and start learning and confidently start understanding and talking YOUR pueblo language. This should be looked at as an investment on and for yourself/s to keep our Po'woh geh Tewa Tun' alive and well. I urge you!!

There will be a series of talks by our pueblo elders about the old days of their own experiences from their past here on the Rez! This will start in May, after all our Easter happenings this month. A schedule will be provided in the May 2025 bulletin.

Should you have any questions, please call my office at 505-455-4170 or come by the DECP building where I am located.

Kun-da-woh-ha!!

AwaTside' (aka: Leon Roybal)



# TEWA LANGUAGE TEACHER

***(TO OFFER CLASSES TO THE PUEBLO'S STUDENTS ATTENDING  
THE SANTA FE INDIAN SCHOOL FOR 2025-26 SCHOOL YEAR)***

## **MUST BE ABLE TO:**

- Teach Tewa Language Classes for MS and HS Students each week for at least twice a week  
(exact schedule of classes to be determined by Pueblo & SFIS)
  - Complete Required Trainings for School & Student Safety  
(all trainings will be provided by SFIS)
  - Follow SFIS Teacher Handbook
- Must commit to at least two years of teaching the language.
- Must pass a Tewa Language Teaching Certificate given by the pueblo
  - SFIS will provide professional development and training
    - Flexible schedule
  - Must pass a background check

***If you are interested or want more details, please contact Leon Roybal,  
Tewa Language Manager at [tewalangmgr@sanipueblo.org](mailto:tewalangmgr@sanipueblo.org) (or 455-4170)***

# NANG OCHU KWIYÓ PIYE

## FOREST BOUND AT P'OSUWAEGEH ÓWINGEH

### A FREE BOTANY AND TEWA LANGUAGE IMMERSION PROGRAM

Curious about the plants around you? Forest Bound is here to help! Many of us go through life without noticing the incredible diversity of our more-than-human relatives around us, relatives our ancestors knew very well. Forest Bound's mission is to cure this "plant blindness" through fun, hands-on experiences. Get to know the plants within our community while immersing yourself in our Tewa language and culture, learning alongside like-minded Tewa T'owa. Along the way, enjoy engaging games, creative artprojects, and experiential lessons that make learning unforgettable!

### YOU'LL LEARN ABOUT:

- Tewa language and worldview
- How to identify native plants
- Seed collection
- Cultural uses of plants
- Medicinal and edible plants
- Pollinators and plants
- Careers in the outdoors
- Plants and art



### WHO CAN ATTEND

Forest Bound is **FREE** and open to all Tewa-speaking Pueblo tribal members.



Scan to apply!

### DATES AND LOCATION

**JULY 7-11, 2025**

P'osuwaegeh Ówingeh and  
Santa Fe National Forest

### CONTACT US

Email all questions to:  
[svcatanach@pojoaque.org](mailto:svcatanach@pojoaque.org)

This program is hosted by the Pueblo of Pojoaque's Tewa Language Department and Institute for Applied ecology. Funded by the USDA Forest Service.



# FOREST BOUND



## A FREE BOTANY IMMERSION PROGRAM FOR TEENS

**Curious about the plants around you? Forest Bound is here to help!**

Many of us go through life without noticing the incredible diversity of plants around us. Forest Bound's mission is to cure this "plant blindness" through fun, hands-on experiences. Get to know your plant neighbors while exploring how they support animals, human cultures, and entire ecosystems. Along the way, enjoy engaging games, creative art projects, and experiential lessons that make learning unforgettable!

## WHAT YOU'LL LEARN ABOUT

- How to identify native plants
- Seed collection
- Cultural uses of plants
- Medicinal and edible plants
- Pollinators and plants
- Careers in the outdoors
- Observation skills
- Plants and art



## WHO CAN ATTEND

Forest Bound is a **free program** open to all participants ages 13-18.



Scan to apply!

## DATES AND LOCATIONS

- July 28-August 1, 2025- Santa Fe
  - Field Location: Santa Fe National Forest
- August 11-15, 202- Albuquerque
  - Field Location: Cibola National Forest

## CONTACT US

Email all questions to:  
tannerjohnson@appliedeco.org

This program is hosted by the Institute for Applied ecology and funded by the USDA Forest Service



**Pueblo de San Ildefonso**  
**April 2025**



## **OFFICE OF NATURAL RESOURCES DEPARTMENT UPDATES**

### NATURAL RESOURCES

As the weather is warming up, please be mindful of changing conditions in the natural environment. Increased temperatures can lead to increase of wildlife activity. Please exercise caution, especially in areas with dense vegetation or near water sources.

The warmer weather increases the risk of wildfires and impacts vegetation management efforts. Please report any unusual wildlife behavior or environmental concerns.

Stay sage and continue practicing responsible stewardship of our natural resources.

### TRANSPORTATION

The Transportation Department works to help people get where they need to go within the Pueblo and beyond. This includes walking, biking, driving, and taking the bus. The roads and plazas of the Pueblo help people get from one place to another, and some of them are also potential places for meetings, play, and ceremonies. We work to understand where people want to go, and how they wish to use the Pueblo's roads and plazas and to develop and maintain them accordingly.

Here are some of the projects we are working on:

- The construction of the Pojoaque Basin Regional Water System will require that certain roads be partially closed in the coming months. We will inform you of them as they are scheduled.
- We are negotiating with the Department of Transportation to improve safety on State Road 30, where new development is planned in the future.
- The bridge on Tunyo Po over the Rio Pojoaque will have its regular safety inspection in April.
- During the Community Events planned for the week of April 21<sup>st</sup>, you are invited to discuss your ideas about the future development of the roads, Village Center, and the Pueblo.

### PARKS AND WILDLIFE

#### Community Safety Message: Be Safe Around Ditches and Waterways

As we enter the irrigation season, we ask all community members to please stay safe around ditches and any flowing water sources throughout the reservation.

- Keep children away from ditches and canals. Fast-moving water can be unpredictable and dangerous.
- Never play or swim in irrigation ditches – the current may seem slow on the surface but can be strong underneath.
- Use caution when working near ditches, especially when using tools or machinery. Wet banks can collapse without warning.
- Watch your step. Vegetation or debris can hide steep drop-offs or unstable ground near ditches.
- Stay alert. Wildlife or insects may be present near water, so be aware of your surroundings.

### **STAFF**

**Natural Resources Director**  
Kate Bohannan

**Realty Officer**  
Daniel Baca

**GIS/GPS Manager**  
Lin Ji

**Transportation Manager**  
Daniel Schwab

**Road Maintenance Tech.**  
Adam Martinez

**Government Assistant Worker**  
Brandon Castillo

**Tribal Ranger**  
Leonard Pino

**Tribal Ranger**  
Derek Valerio



## OFFICE OF NATURAL RESOURCES (P. 2)

### PARKS AND WILDLIFE (CONT.)

Water is life. Let's work together to protect our people and care for our shared resources by being mindful and respectful near our ditches and waterways.

If you see an unsafe condition, please report it to the Rangers or Natural Resources Department.

#### Wildfire & Brush Fire Safety Message

##### **Stay Ready. Stay Safe. Protect Our Land.**

With the dry season approaching, the risk of wildfires and brush fires increases. Please help keep our community, homes, and sacred lands safe by following these fire safety practices:

- Do not burn trash or brush without proper permits and notification.
- Clear dry vegetation and debris away from your home, sheds, and fences.
- Avoid using equipment like chainsaws, mowers, or welders during hot, dry, and windy conditions.
- Never leave campfires or cookouts unattended. Make sure fires are completely out before walking away.
- Report suspicious activity or uncontrolled burning to Rangers or Fire Department immediately.
- Have a plan for your family and animals in case of an evacuation.

Fire can start small but spread fast. Let's respect the land, protect each other, and stay alert this fire season. For more info or to report concerns, contact your local Fire Department or Natural Resources Office.

##### Fire Departments:

Pojoaque Dispatch (505) 455 - 2295

Santa Fe Dispatch (505) 438 - 5600

Dispatch of Northern Pueblos Agency, Fire resources 24-hour line 505-438-5600

#### Reporting Animal Incidents & Trespassing on Pueblo Lands

To help protect our community, sacred lands, and animals, all community members are encouraged to report any animal-related incidents or trespassing concerns. Your reports help Tribal Rangers and Animal Control respond quickly and effectively.

##### WHAT TO REPORT:

- Stray or aggressive animals, Trespassing livestock or pets, Animal neglect, abuse, or abandonment, Injured or sick animals, Illegal hunting or poaching, and Suspicious activity involving animals or trespassers

##### HOW TO REPORT:

1. Contact Tribal Rangers or Animal Control directly.
2. Submit a written or digital report via tribal office or email.
3. For emergencies, call tribal emergency services.

##### WHAT TO INCLUDE:

- Date and time of incident, Exact location (road, address, or landmark), Description of animal(s) or people involved, Details of what happened, Photos or videos (if safe to capture), and Your contact info (optional but helpful)



## OFFICE OF NATURAL RESOURCES (P. 3)

### PARKS AND WILDLIFE (CONT.)

#### WHY IT MATTERS:

Your reports help us:

- Enforce tribal laws, Protect sacred areas and property, Ensure animal welfare, and Keep our community safe

**If you see something, say something.**

**Every report matters. Working together keeps the Pueblo safe and respectful for all.**

For more information or to report, contact:

Tribal Ranger or Animal Control Contact Info :

Leonard Pino: (505)238-6763 / [ranger2@sanipueblo.org](mailto:ranger2@sanipueblo.org)

Derek Valerio: (505)364-2672 / [ranger3@sanipueblo.org](mailto:ranger3@sanipueblo.org)

Natural Resources Director, Kate Bohannan: C.(505)252-5835 O. (505)455-4138

[natural.resources@sanipueblo.org](mailto:natural.resources@sanipueblo.org)

#### Pet Supplies:

The parks & Wildlife Department is happy to announce that we have received a limited supply of pet supplies. This is made possible thanks to a generous donation from Los Alamos County Animal Shelter, whose support has been instrumental in assisting our efforts and strengthen the resources of our Animal Shelter.

A variety of essential supplies to help provide care for your pets, include:

- Dog houses
- Feeding bowls
- Nutritious pet food
- Treats
- Cozy beds
- Toys
- Grooming supplies

If you need supplies, please reach out to the Tribal Rangers to make arrangements for pickup. We thank you for your continued support and commitment to the well-being of all animals in our community.





## OFFICE OF NATURAL RESOURCES (P. 4)

### PARKS AND WILDLIFE (CONT.)

#### 2025 Irrigation Season Summary and Ditch Cleaning Schedule

Summary of what to expect for the upcoming 2025 irrigation season on the reservation, including important updates, what to expect during the season, and scheduled ditch cleaning dates.

##### Key Updates for the 2025 Season:

- Irrigation scheduling will be coordinated with the Natural Resources Department to ensure fair access to water for all farmers.
- Water flow will be monitored weekly to address any issues with blockage or shortages.
- Increased attention will be given to ditch maintenance and user responsibilities to support water conservation and flow efficiency.
- Two non-tribal users (Nick Carr and Bruce Duran) with water rights will be included in coordination for ditch use.

##### What to Expect:

- Scheduled use of water by individual farmers to prevent overuse or conflicts.
- Regular inspection and clearing of debris from ditches by assigned teams or individuals.
- Coordination with Rangers and Natural Resources staff for any issues or needed support.
- Community updates and possible meetings if drought or low water conditions occur.

##### Scheduled Ditch Cleaning Dates:

- May 3, 2025
- July 12, 2025
- October 18, 2025

Community participation is highly encouraged on these dates to ensure our ditches remain clear and functional.

For questions or concerns about ditch use or the irrigation schedule, please contact the Natural Resources Department or speak directly with the Rangers. Your involvement is key to a successful and sustainable irrigation season.

##### Natural Resources and Tribal Ranger Contact Info :

Leonard Pino: (505)238-6763 / [ranger2@sanipueblo.org](mailto:ranger2@sanipueblo.org)  
Derek Valerio: (505)364-2672 / [ranger3@sanipueblo.org](mailto:ranger3@sanipueblo.org)  
Natural Resources Director, Kate Bohannan: C.(505)252-5835 O. (505)455-4138  
[natural.resources@sanipueblo.org](mailto:natural.resources@sanipueblo.org)



## OFFICE OF NATURAL RESOURCES (P. 5)

### NEW EMPLOYEES

Daniel Schwab– Transportation Planning Manager

“Hello, My name is Daniel Schwab and I am the new Transportation Manager for the Pueblo since the beginning of this year. I am an urban planner trained in Germany and in Washington State. I have worked for the City of Santa Fe and Santa Fe County before coming to the Pueblo. I am interested in helping the Pueblo improve its transportation, especially getting around on bikes and walking and looking after the roads. I look forward to hearing more from you about your ideas for the future development of the Pueblo. “



Derek Valero– Tribal Ranger

“Hello! My Name is Derek, I am a dedicated professional with a diverse and impactful career in security, law enforcement, conservation, and environmental sustainability. With a robust background in both public safety and environmental stewardship, I bring a unique blend of expertise and passion to every role I undertake.



I began my career with the U.S Department of Homeland Security, I then spent most of my recent years as a Protective Forces Officer with Los Alamos National Labs. In this role, I was responsible for safeguarding critical infrastructure and nuclear materials, ensuring the highest levels of security in a high-risk environment. This experience sharpened my skills in threat mitigation, emergency response, and maintaining security protocols. In addition, I have extensive experience as an Armed Contracted Security Officer, where I applied my expertise in physical security, risk assessment, and asset protection. I have also served as a Youth Conservation Corps Coordinator with Rocky Mountain Youth Corps, leading initiatives to engage and educate younger generations about the importance of conservation and environmental responsibility. I also worked as a State Inspector and Investigator, I gained invaluable experience in regulatory compliance and enforcement, conducting detailed inspections and investigations to uphold state laws and regulations.

My academic background includes an Associate’s Degree in Sustainable Technologies from Santa Fe Community College, where I developed a deep understanding of environmentally sustainable practices and technologies. This complements my love for the outdoors, fueling my passion for conservation and sustainability in both my professional and personal life. With my varied experience and education, I am committed to making a meaningful impact in the areas of security, conservation, and sustainability. I thrive in challenging, dynamic environments and am eager to continue contributing to initiatives that protect the people, communities, and the planet.”

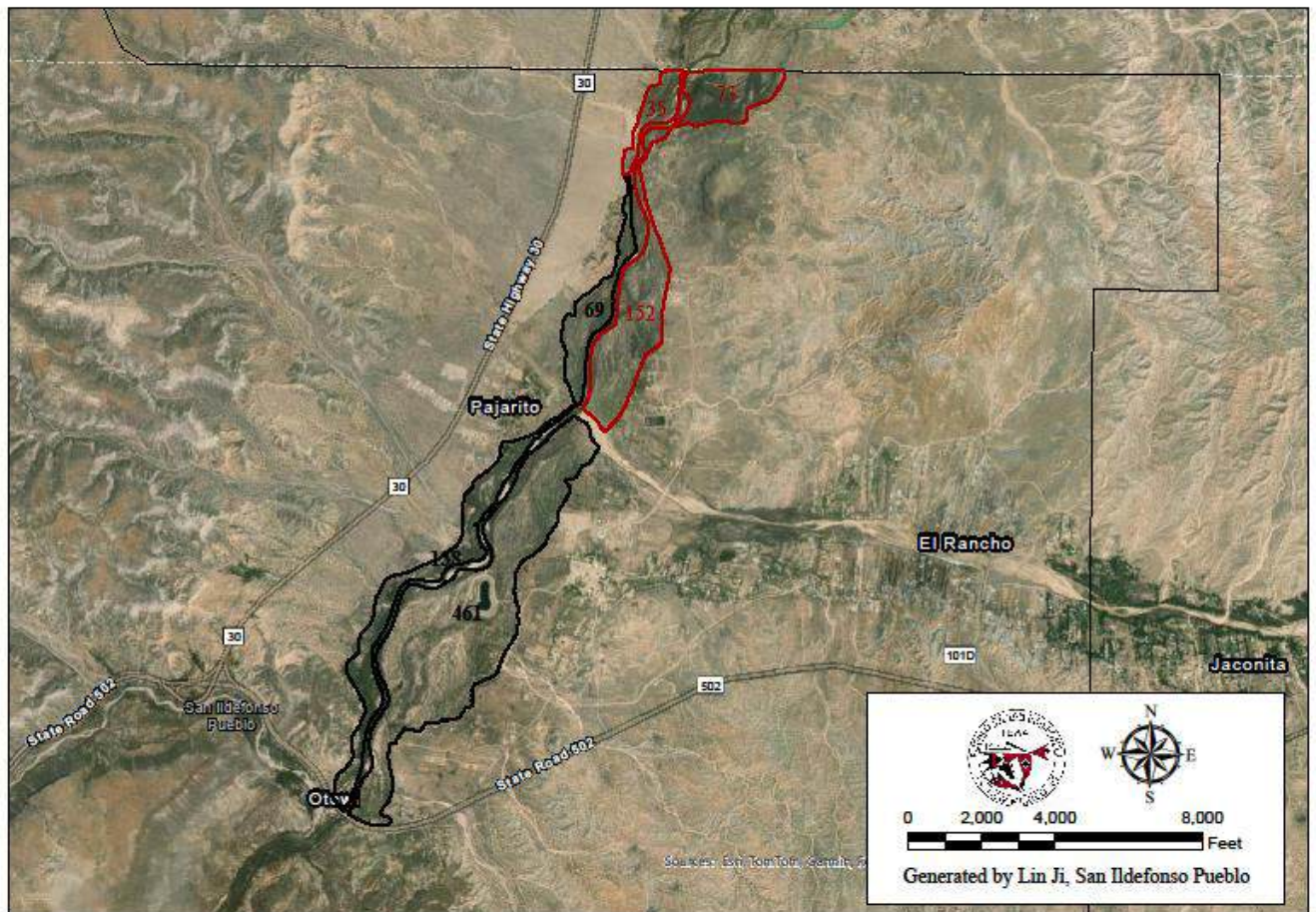


# Natural Resources Department GIS/GPS News



Our department conducted field investigations and developed detailed vegetation boundary maps for the Bosque Mastication Project. This work includes a completed 260-acre treatment area and a proposed 928-acre expansion stretching from the Pueblo's northern boundary to the Otowi Bridge.

## Pueblo de San Ildefonso Proposed 928 Acre Bosque Area



If you have any questions, please contact Lin Ji, GIS/GPS Manager of San Ildefonso Pueblo at [gismanager@sanipueblo.org](mailto:gismanager@sanipueblo.org) or 505-455-4144



# APRIL OVERVIEW

SCHC will be CLOSED for renovations from April 7, 2025 to May 2, 2025.

During this time All services will be provided at the Santa Fe Indian Health Clinic (SFIHC).

Contact Information:

Main Number: 505-988-9821

Same Day/Acute Care Appointments:

Available 7 days a week, 8 AM - 7 PM

## San I Community April Step Challenge April 1-31, 2025

Participants should track their daily steps using an app, limited number of available pedometers. Steps should be recorded on provided calendar. Senior Citizens can double steps on senior walking days on Tues. & Thurs. from 10:30-11:30AM. All completed calendars must be turned in to HHS office by Fri. May 2, 2025.

\*Drawing to win a pair of shoes \*1 male & 1 female winner\*

**22** **12PM-1:15PM**  
*Light lunch provided*

**DO I NEED COUNSELING?**

SR. CENTER LIVING ROOM

**24** **9AM-11AM**

**MONTHLY FOOD PANTRY**

SENIOR CTR PARKING LOT

**30** **10AM-4PM**  
*Lunch provided*

**DE-ESCALATION TRAINING**

SERNA SOLUTIONS

## Senior Farmer's Market Nutrition Program (SFMNP)

*As of March 17, 2025, SFMNP has reached the maximum number of applications*

*Applications submitted will be placed on a waiting list but are not guaranteed approval*

*Future applications will reopen on July 1, 2025, with benefits expiring on November 15.*

*WIC participants can contact their clinic starting July 1, 2025. Federal benefits will be available from that date as well.*

*For more information, visit: [New Mexico WIC Farmer's Market Nutrition Program] (<https://www.nmwic.org/farmers-market-nutrition-program>)*

# April 2025 Step Challenge

Sunday	Monday	Tuesday	Wednesday	Thursday	Friday	Saturday
		1	2	3	4	5
		Total Steps	Total Steps	Total Steps	Total Steps	Total Steps
		_____	_____	_____	_____	_____
6	7	8	9	10	11	12
Total Steps	Total Steps	Total Steps	Total Steps	Total Steps	Total Steps	Total Steps
_____	_____	_____	_____	_____	_____	_____
13	14	15	16	17	18	19
Total Steps	Total Steps	Total Steps	Total Steps	Total Steps	Total Steps	Total Steps
_____	_____	_____	_____	_____	_____	_____
20	21	22	23	24	25	26
Total Steps	Total Steps	Total Steps	Total Steps	Total Steps	Total Steps	Total Steps
_____	_____	_____	_____	_____	_____	_____
27	28	29	30			
Total Steps	Total Steps	Total Steps	Total Steps			
_____	_____	_____	_____			

Name: \_\_\_\_\_ Total Steps \_\_\_\_\_



We are excited to invite you to  
Community Resource Week  
**SAVE THE DATES**

April 22 - 25, 2025

Keep an Eye Out for Details &  
Activities throughout the Week



## San Ildefonso Senior Center APRIL 2025

Sunday	Monday	Tuesday	Wednesday	Thursday	Friday	Saturday
		<b>1</b> Frito Pie w/Ground Beef Pinto Beans Red Chili Garnish Fruit Milk	<b>2</b> Pork Chop Country Gravy Steamed Rice Peas & Carrots Cucumber Salad Roll Fruit / Milk	<b>3</b> Beef Tacos Steamed Veggies Garnish Salsa Pinto Beans Fruit/MILK	<b>4</b> Macaroni & Cheese Garden Salad Steamed Veggies Fruit Milk	<b>5</b>
<b>6</b>	<b>7</b> Spaghetti w/Ground Beef Steamed Vegetables Garden Salad Garlic Bread Fruit Milk	<b>8</b> CLOSED FOR LUNCH DEFENSIVE DRIVING CLASS	<b>9</b> Ham /Turkey Cheese Sandwich Garnish Baked Chips Fresh Fruit Milk	<b>10</b> Beef Vegetable Stew Mixed Vegetables ww-Rolls Garden Salad Fruit/Milk	<b>11</b> CLOSED FOR LUNCH CPR CLASS	<b>12</b>
<b>13</b>	<b>14</b> Shredded BBQ Beef Sandwich Pork & Beans Cole Slaw Steamed Corn Baked Chips Fruit / Milk	<b>15</b> SENIOR EASTER LUNCHEON	<b>16</b> Cheese Burger Garnish Pork & Beans Baked Fries Steamed Vegetables Fruit/Milk	<b>17</b> Salad Bar Broccoli Soup Crackers Cottage Cheese Fruit/Milk	<b>18</b> CLOSED GOOD FRIDAY NO LUNCH	<b>19</b> MENU IS SUBJECT TO CHANGE IF FOOD ITEMS ARE NOT AVAILABLE
<b>20</b> EASTER SUNDAY	<b>21</b> Chicken Tenders CornOnThe Cob Baked Fries Fruit Milk	<b>22</b> CLOSED FOR CLEANING	<b>23</b> Beef & Veggie Stuffed Sopapilla Garden Salad Fruit Milk	<b>24</b> Chicken Salad Croissant Sandwich Garnish Baked Chips Pork & Beans Fruit Milk/Yogurt	<b>25</b> Pan Cakes Boiled egg Hash Browns Yogurt Fresh Fruit Milk	<b>26</b> LUNCH IS SERVED 11:30 to 12:30
<b>27</b>	<b>28</b> Beef Alfredo Noodles w/Steamed Broccoli Caesar Salad Garlic Bread Fruit/mILK	<b>29</b> Red Pork Tamale Plate Steamed Veggies Tortilla Carrot Raisin Salad Fruit / Milk	<b>30</b> Baked Chicken Mashed Potatoes,Gravy Steamed Corn Garden Salad Roll Fruit / Milk			SENIOR CENTER (505) 455-7326

# APRIL 2025

## San Ildefonso Senior Center

Sunday	Monday	Tuesday	Wednesday	Thursday	Friday	Saturday
		1	2 SENIOR PLANNING SESSION 10:00am	3 MORNING WALKING @10:30 GYM  WISDOM MASS ISLETA PUEBLO Leaving @ 9:00am	4	5
6	7 MEOW WOLF Leaving @ 4:00pm	8 CLOSED NO LUNCH DEFENSIVE DRIVING CLASS 8:30 / 12:00  MORNING WALKING @10:30 AT THE GYM	9 CHR SCREENING <u>11:30/12:30</u>	10 MORNING WALKING @10:30 GYM  SANTUARIO MASS Leaving @ 9:00am	11 CLOSED NO LUNCH ATTENDING CPR CLASS  MASSAGE THERAPIST 10:00am/12:00pm By Appointment Only	12
13	14	15 MORNING WALKING @10:30 GYM  SENIOR EASTER LUNCHEON	16	17  PEACEKEEPERS 11:30	18  CLOSED GOOD FRIDAY	19 <u>EVENTS ARE SUBJECT TO CHANGE</u>
20  EASTER SUNDAY	21	22 MORNING WALKING @10:30 GYM  CLOSED CLEANING DAY ALL SR. CENTERS	23 CHR SCREENING <u>11:30/12:30</u> MUSEUM OF INDIAN ARTS AND CULTURE; LABORATORY OF ANTHROPOLOGY	24 MORNING WALKING @10:30 at GYM  MASSAGE THERAPIST 10:00am/12:00pm By Appointment Only	25  GATHERING OF NATIONS Leaving @ 12:00pm	26 <u>SENIOR CENTER (505) 455-7326</u>
27	28	29 MORNING WALKING @10:30 GYM	30 Ojo CALIENNTE Leaving @ 4:00pm			29
30	31					





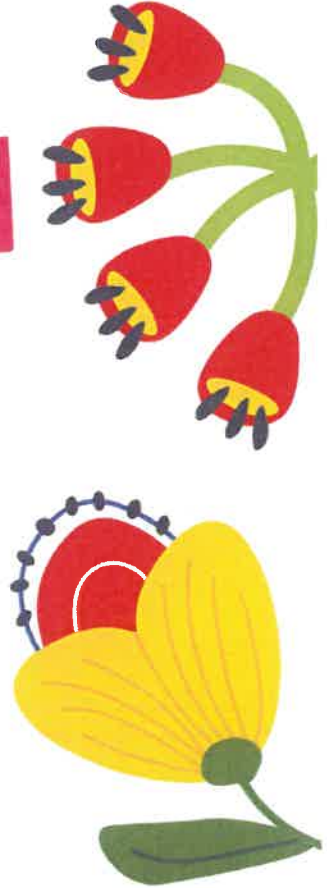
*You are invited to*  
**SANTA FE COUNTY SENIOR SERVICES'**

# SPRING FLING

**24 April, 2025**  
**Lunch - 11:30-1:00**  
**Dance - 1:00 - 4:00**

**Santa Fe County**  
**Fairgrounds**  
3229 Rodeo Rd  
Santa Fe, NM 87507

Music by Lluvia Negra  
Feat. Uvaldo Olonia





SANTA FE COUNTY SENIOR SERVICES

# Health & Wellness Fair 2025

Join us and over 30 vendors for health and aging assistance and information plus take the Santa Fe County Senior Needs survey to help shape the future of Senior Services.

**APRIL 21, 2025 • 10 A.M. - 2 P.M.**  
**SANTA FE COUNTY FAIRGROUNDS**

Take charge of your aging journey. Learn about available services, gain information from local health agencies, and prepare for the future with friendly people and fun giveaways!





## San Ildefonso Library

Phone: (505) 455-2635  
Fax: (505) 455-2641

**Aaliyah Gonzales**  
Librarian/ASP Coordinator  
[agonzales@sanipueblo.org](mailto:agonzales@sanipueblo.org)

**Rick Juliani**  
Education Director  
Cell: (505) 321-9694  
[rick.juliani@sanipueblo.org](mailto:rick.juliani@sanipueblo.org)

**Bernice Martinez**  
Education Manager  
Cell: (505) 660-0149  
[bmartinez@sanipueblo.org](mailto:bmartinez@sanipueblo.org)

**Katerie Martinez**  
Home Visitor  
Ph: (505) 455-4140  
[homevisitor@sanipueblo.org](mailto:homevisitor@sanipueblo.org)

**Melissa Medina**  
College & Career Readiness Coord.  
Ph: (505) 455-4167  
[mmedina@sanipueblo.org](mailto:mmedina@sanipueblo.org)

## VISIT OUR WEBSITE

[www.sanipueblolibrary.org](http://www.sanipueblolibrary.org)

To sign up for a library card  
& check out our resources

### Patrons with a Library card

have access to 1000s of  
articles from newspapers  
across the USA through  
**America's News**

Find  
reliable  
information  
on any topic.



America's News



April, 2025

Education Department  
EAGCATION DEBAMUNSI



## HAPPENING NOW

### REGISTRATION FOR THE 2025 SUMMER PROGRAM IS OPEN

For details see flyer on the following pages!

**Now HIRING for Summer Program Coordinators & Aides.**  
**If you are interested in WORKING AT THE SUMMER PROGRAM,**  
**see Human Resources for openings & applications!!**



## HOME VISITING PROGRAM



NOW VISITING with PARENTS/EXPECTING PARENTS OF YOUNG CHILDREN (0-5)

**\*This Month's Dinner & Family Events: Postponed Until After Easter\***

For more details and how to join, contact Katerie Martinez

## COLLEGE/CAREER SERVICES

### CAREER SUPPORTS

**Need FREE money to pay for more school or to enter a career???**

(vocational, technical/trades, or college)

Get help completing Free Application for Federal Student Aid (FAFSA)

OR with any other career-related needs!

See Melissa at the San I Library (9:30 am-5:30 pm @ Tuesdays-Fridays)

## TRADE SCHOOLS WORKSHOP

**APRIL 24 (5:30-6:30 pm @ the Library. INFORMATION ON TRADES PROGRAMS  
AT NNMC, SFCC & UNM-LA (Including Welding, Automotive Tech & More!)**

**Food will be provided & Instructors will be on hand to provide information  
on how to join these programs!**

San Ildefonso Education Dept.

# Summer Education Enhancement Program

Starting June 16th, 2025

**NEW GUIDELINES:  
MUST HAVE COMPLETED  
KINDERGARTEN AND  
MUST BE POTTY-TRAINED**

REGISTER  
BEGINNING  
May 1st, 2025

Contact the San Ildefonso Library for more  
information or Registration Forms



# TRADES INFO NIGHT

Learn about the trades programs  
offered at  
Northern New Mexico College,  
Santa Fe Community College and  
UNM-Los Alamos

DATE

04.24.25



TIME

5:30 pm



**San Ildefonso  
Library**


For more information  
please contact  
[mmedina@sanipueblo.org](mailto:mmedina@sanipueblo.org)



 **YOU'RE INVITED!**

## **San Ildefonso X3 Internship Celebration** *Honoring Our Youth, Mentors & Community*

 **Wednesday, April 30th**

 **5:00 – 7:00 PM**

**(dinner starts at 5:00 PM)**


 **Tewa Center, San Ildefonso Pueblo**


Join us for an evening of **celebration, storytelling, and inspiration** as we honor San Ildefonso students and community mentors who have participated in the X3 Internship Program.


Enjoy a shared meal and hear firsthand from youth and mentors about the power of work-based learning in our Pueblo—and how it's opening doors for the future.

### **Interested in Paid Internships?**

This event will be an opportunity for **young people and families** to learn how to get involved in future X3 internships, which offer:

 **\$16–\$18/hour pay**

 **Real-world experience** working in San I Pueblo departments, community non-profits, or local businesses in Northern NM

 **Skills and confidence** to succeed in future jobs and careers

This event is **open to the whole community**—families, educators, tribal leaders, and all who support our youth are warmly invited.



**Hosted by:**

San Ildefonso Education Department  
& Future Focused Education



*RSVP encouraged!*

Email [kaitlin@futurefocusededucation.org](mailto:kaitlin@futurefocusededucation.org)

or text (505) 226-6757

# San Ildefonso Early Childhood Program & ENIPC Head Start

## Annual Child-Find

**For School Year 2025-2026**

Friday, April 25, 2025

Pueblo de San Ildefonso Library

9:00am to 3:00pm

Head Start Application will be on site

\*\*\*\*

More information call Bernice at 660-0149/455-2635



# 2025 Youth Indian Police Academy

Seeking Highly Motivated High School Students

## BIA-BIE Youth Indian Police Academy

The Bureau of Indian Affairs and the Bureau of Indian Education are hosting the third annual Youth Indian Police Academy for high school students held at the Riverside Indian School. Students will leave the program with an understanding of community policing, which is focused on providing encouragement, hope, inspiration, and mentorship for participants.



## How to Apply:

Twenty-eight students will be chosen to participate and receive travel, housing, and meals. Students must submit a five-paragraph essay explaining who they are, their life goals, and why they want to attend the Youth Indian Police Academy. Final essays must be emailed to David.Conley@bia.gov on or before May 09, 2025.

## Note for Guardians:

Upon student selection, guardians must complete an admissions package, which will be emailed after selections are finalized.

## FACTS & TASKS

### When:

June 15-27, 2025

### Where:

Riverside Indian School  
Anadarko, OK

### Deadline:

May 09, 2025

## HANDS-ON LEARNING:

- Accident Investigation & Crime Scene Labs
- Driving Under the Influence Simulations
- Emergency Medical Services Certification
- Full Immersion Learning Field Trips
- K9 Demonstrations
- Nightly Team Building Events
- Special Weapons & Tactics Demonstrations
- Tactical Training Exercises







## Pueblo de San Ildefonso Tribal Courts

02 Tunyo Po Santa Fe NM, 87506

(505) 455-7500 / (505) 455-4168

Since the start of 2025 the Tribal Courts has been undergoing and implementing some changes to the court and its services to better serve the community. In addition to hiring a new Court Administrator and Chief Court Clerk, the Court is excited and hopeful for some possibilities to move in a more modern direction.



# IMPORTANT INFORMTATION



**Court staff is happy to assist you if they can but please keep in mind that the Court MUST be fair to everyone and staff is only allowed to help in certain ways.**

The Court and its staff **CAN**:

- Explain and answer general questions about how the court works.
- Give you general information about court rules, procedures, and practices.
- Provide court schedules and information on how to get a case scheduled.
- Give you information from your case file that is not restricted.
- Provide you with court forms and instructions that are available.
- Generally answer questions about court deadlines.



The Court and its staff **CANNOT**:

- Tell you whether or not you should bring your case to the court.
- Tell you what words to use in your court papers or whether they are correct.
- Tell you what to say in court.
- Give you an opinion about what will happen if you bring your case to court.
- Conduct legal research for you.
- Talk to the Judge for you OR let you talk to the Judge outside of court.
- Discuss the status of a case for which you are not a party.
- Copy, email or fax documents on your behalf.
- Alter court documents.



**WE CANNOT GIVE YOU LEGAL ADVICE!!**



# Pueblo de San Ildefonso Tribal Courts

02 Tunyo Po Santa Fe NM, 87506

(505) 455-7500 / (505) 455-4168

## MEET THE TEAM



My name is Diane Vigil, and I am honored to serve as the new Court Administrator for the Pueblo. Having been with the Pueblo since May 2023, I initially had the privilege of working as the HR Manager, where I had the opportunity to collaborate with many of you and support the growth and well-being of our workforce.

With two Bachelor's degrees—one in Business Administration and the other in Project Management—I bring a diverse skill set and a strategic mindset to my new role. In addition to my education, I have 17 years of experience in small business, where I developed a strong foundation in managing complex operations, leading teams, and delivering results. These experiences have shaped my approach to problem-solving and leadership, which I now look forward to applying as Court Administrator.

While I thoroughly enjoyed my time in HR and valued the connections I made, I am excited to embrace this new chapter in my career. As Court Administrator, my focus is on ensuring that our court system runs smoothly, efficiently, and fairly. I am committed to transparency, fostering positive relationships, and making sure that the legal processes within our Pueblo remain accessible and responsive to the needs of our community.

I am genuinely excited about this new journey and am eager to continue offering my services in a way that enhances the Pueblo for all of us. If you ever have any questions or need assistance, feel free to reach out. I'm here to help!

**Diane Vigil**  
Court Administrator

Hi! My name is Justine Fender. I started this new journey at the beginning of December 2024 and I am currently the new Chief Court Clerk.

I graduated from the New Mexico Law Enforcement Academy back in 2020 and up until August of last year I worked for the Santa Clara Pueblo Police Department as a dispatcher. I bring with me more than six years of Law Enforcement background and I look forward to incorporating what I have learned into our Court so we run more smoothly and efficiently.

Being born and raised within the Pueblo, I am grateful to have this opportunity to work and serve my home community.



**Help is Just a Phone  
Call Away!**

**Come and talk to us!  
Private, Professional  
and Confidential!**

**Outpatient Counseling for  
many mental health and/or  
substance use challenges**

**505-370-7499**



**Black Mesa  
Behavioral Health**



**PRIVATE & PROFESSIONAL COUNSELING**

**29 ODO PO, SAN ILDEFONSO PUEBLO**

**505-370-7499**

**A partnership of Serna Solutions and Pueblo de San Ildefonso**



## Check Your Alcohol Use:

SAMHSA



Set a daily & weekly drinking limit



Record how much you drink each day



Write down your limit & keep it with you



Avoid situations & triggers that cause you to drink



Talk with a doctor about your alcohol use



Ask a friend to help you stay within your limit

### What is a Standard Drink?

- 12 ounces of beer (5% alcohol content)
- 8 ounces of malt liquor (7% alcohol content)
- 5 ounces of wine (12% alcohol content)
- 1.5 ounces or a "shot" of 80-proof (40% alcohol content) distilled spirits or liquor (e.g., gin, vodka, rum, tequila, whiskey, brandy)



APRIL

ALCOHOL  
AWARENESS  
MONTH

# Signs Your Child Might Be Vulnerable to Using Alcohol



School problems



Mood changes



Rebellion against family rules



A "nothing matters" attitude



Friend changes



Alcohol presence



Physical or mental problems

**SAMHSA**

**APRIL**

**ALCOHOL  
AWARENESS  
MONTH**



## Signs of Drinking Too Much:

*SAMHSA*

You drink more or longer than you intended

You need to drink more than you once did, to get the effect you want

You spend a lot of time drinking or thinking about alcohol

You continue to drink even though it makes you feel depressed or anxious - or adds to another health problem

Loved ones or trusted friends have made comments about your drinking

You try to cut down or stop drinking, but are not able to

You find that drinking interferes with daily activities, family, friends, or work

Or maybe...

- You have had legal problems due to drinking
- You have experienced symptoms of **withdrawal when you don't drink** (such as shakiness, sweating, tremors, headaches, anxiety, irritability, and/or insomnia)

**APRIL**

**ALCOHOL  
AWARENESS  
MONTH**



**San Ildefonso Services, LLC**  
*Tribally Owned Small Business*

---

---

## **San Ildefonso Services Update**

Dear Community Members,

### **Tribal Broadband Bootcamp (see attached)**

3- day learning intensive. If you or anyone you know of is interested, please reach out to us for a registration form. We have limited slots available.

Build your career with San Ildefonso Services. We are hiring motivated, hard working individuals. We are excited about the promising economic development prospects that lie ahead for the Pueblo.

### **Job Opportunities**

Construction and Demolition & Remediation

JOB TITLE: General Labor

For additional information and inquiries, call SIS office (505) 455-9149.

Tewa Market Convenience Store & Gas Station

JOB TITLE: Customer Service Representative (CSR)

Contact the Hiring Manager at [rpeterston@sanisvcs.com](mailto:rpeterston@sanisvcs.com) Or call Totavi (505) 455-1941 or White Rock (505) 672-3610 to learn more about Tewa Market opportunities.

Benefits include: Healthcare (medical, dental, vision); Paid Time Off; Paid Holidays; Life Insurance; Disability Insurance; 401K Retirement Plan.

Apply Now!

### **Future Opportunities:**

**Solar Technician:** SIS has gotten grants from Grid Alternatives and Rural Development Corporation and there is Solar Installation Training that will happen in late spring as we work to implement the construction of a solar array.

**IT Specialist/Trainer:** SIS will be seeking funds to hire Tribal members to help with the deployment of the fiber project to get it up and running and to teach community members how to best use it. This role might be needed in summer 2025.

**Fiber Technician:** With the planned installation of the fiber project starting late winter and into the spring and summer, we will be looking to develop a fiber optic technician installation and maintenance team. Training will be available locally and through Santa Fe Community College. ([www.sfcc.edu/economic-workforce-development](http://www.sfcc.edu/economic-workforce-development))

Let us know if you are interested in either of these and we will keep you updated as the opportunities become available. (505) 455-9149

**NOTICE** Cooking equipment for a Commercial Kitchen – Mixer and Kettles formerly IHS Santa Fe kitchen. Call the SIS office 505-455-9149.



# TRIBAL BROADBAND BOOTCAMP

**STRENGTHENING SOVEREIGNTY AND SELF-DETERMINATION**  
BY BUILDING LOCAL BROADBAND SOLUTIONS.



**GREAT FOR BEGINNERS**

## What is the Tribal Broadband Bootcamp?

The Tribal Broadband Bootcamp (TBB) is a 3-day immersive, hands-on learning experience focused on broadband opportunities in Indian Country. You'll interact with network operators and industry professionals who walk through what it takes to build, manage, or work at Tribally-owned networks. Whether you have three decades or three days of experience, TBB will help you understand the broadband puzzle. **Organized by Waskawiwin, TBB17 is hosted by Jemez Pueblo Tribal Network (JNET) and will be held April 7 - 10, 2025.**



## Who is the Tribal Broadband Bootcamp for?

TBBs are for folks in Indian Country interested in or focused on broadband. While intermediate and expert practitioners will also benefit from many sessions and networking opportunities, **TBB17 can especially benefit beginners like new employees**, anyone interested in working in broadband, or Tribal leadership looking to become more knowledgeable. We also welcome small teams - TBB is a great team-building experience!

## How can I participate?

To express interest in attending TBB17 hosted by Jemez Pueblo Tribal Network (JNET), please visit [TribalBroadbandBootcamp.org](https://TribalBroadbandBootcamp.org). TBB17 is brought to you by Waskawiwin, with support from Institute for Local Self-Reliance, Tribal Resource Center, Calix, Merit Network, and Democracy Fund. **Meals during the bootcamp are covered. Housing and travel support may also be available.**

## Upcoming Bootcamps



★ Several additional bootcamps coming in 2025





Pueblo de San Ildefonso

# SPRING *Bazaar*

Saturday, April 12, 2025

9AM - 4PM

San Ildefonso Tewa Center

**Bazaar will feature San Ildefonso Pueblo Artists  
and Community Members**

For more information, Please contact Denise at (505)692-5580, Harold  
Torres at (505)231-6814, or the Visitor Center at (505)455-4151