



## **Pueblo de San Ildefonso Bulletin February 2025**

### **Inside this Issue**

- Office of Natural Resources
- Office of Project Management
- Transfer Station News
- Visitor Center Merch
- Senior Center Calendar/ Menu
- Health and Human Services Newsletter
- Love Yourself Event
- Tewa Language Program
- Education Department
- ENIPC Adult Vocational Training
- Trades Education
- Career Guidance
- Home Visiting: Father-Daughter Dance
- Employment Opportunities
- San Ildefonso Housing Authority
- Black Mesa Behavioral Health
- Pojoaque Little League

**Happy  
Valentine's  
Day!**

### **Working Session Dates**

Tuesday, February 11, 2025 at 5:10 pm  
Thursday, February 20, 2025 at 5:10 pm

### **Council Meeting Dates**

Wednesday, February 26, 2025 at 5:10pm  
Dates and time are subject to change.

Unless otherwise noted, all Council Sessions and Council meetings are open for enrolled Tribal Member participation.

---

### **Santa Clara Clinic Pharmacy**

On Monday, January 27, 2025, the Santa Clara Clinic Pharmacy resumed filling medications. Reminder to be patient with staff during this transition time.

---

### **Tribal ID's**

Reminder that Tribal ID's are available with the Enrollment Clerk, Jasmin Gonzales, at the Tribal Admin Office. Walk-ins are welcome but appointments are encouraged.

---

### **Office Closure**

All Tribal Administrative offices will be closed on Monday, February 17, 2025 in observance of Presidents day.

---

### **Contact Us:**

2 Tunyo Po, Santa Fe, NM 87506  
Phone: (505) 455-2273  
Fax: (505) 455-7351



## **Pueblo de San Ildefonso**

### ***Office of Natural Resources***

January 29, 2025

**To: Tribal Members**  
**Re: Available Wood**  
**From: Natural Resources Department**

Effective: February 3, 2025

Wood is available located on the West side of the Rio Grande River, O TOH NAH PO road.

Wood is available, resulting from the 2024 Bosque Mastication Project ongoing. The project aims to improve habitat conditions, reduce wildfire risks, and promote ecological restoration by thinning overgrown areas within the Bosque areas. The project focuses on invasive species.

There are two site locations for the project. The West side is located on O TOH NAH PO road. The project boundaries start at the South boundary extending to the first residential area.

The wood resource is available on a first come first served basis. Please be cautious of rough terrain.

Thank you for your attention to this opportunity to make sustainable use of resources generated by our habitat restoration efforts.

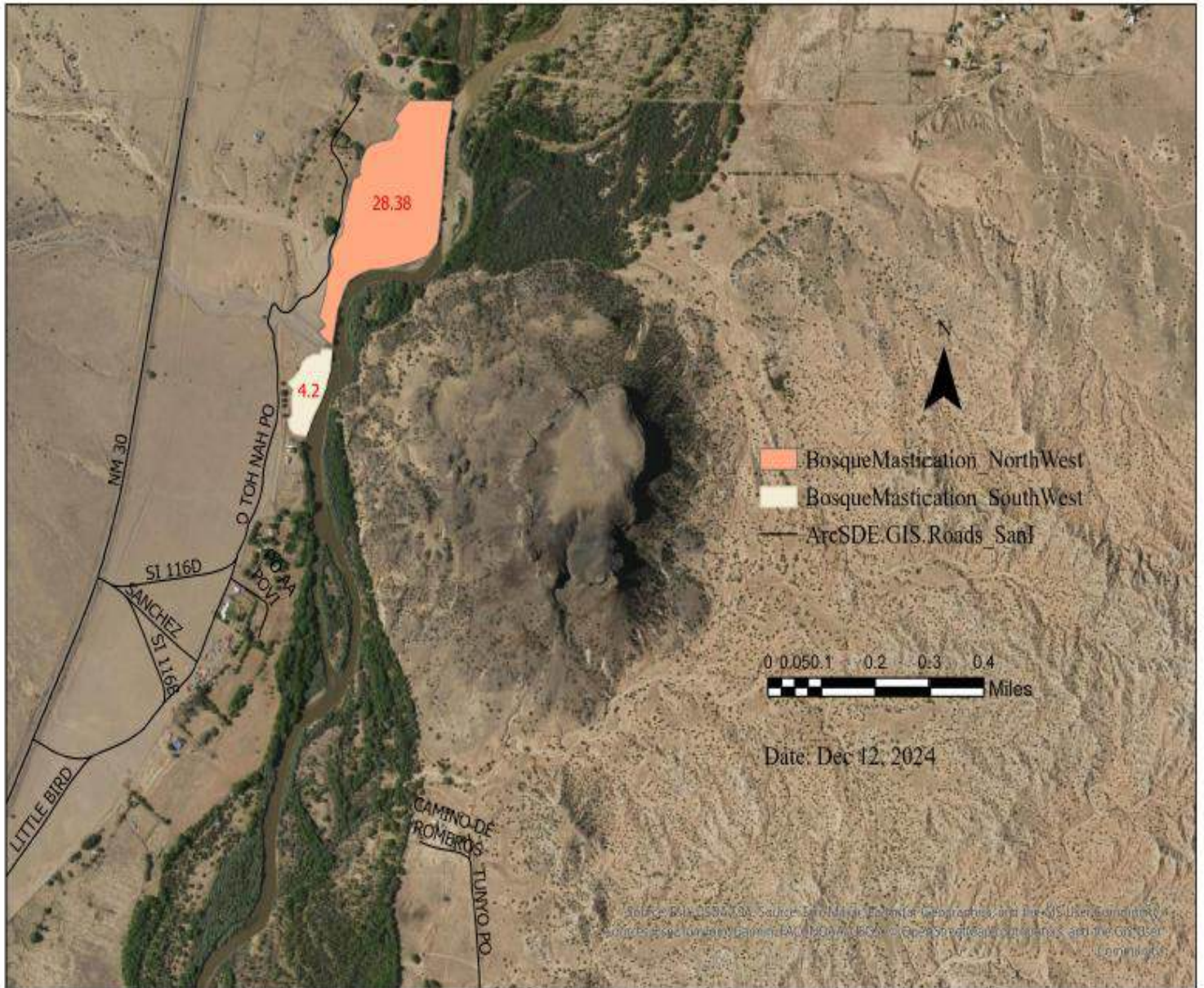
#### **Additional Information:**

***Kate Bohannon, Natural Resources Manager***  
**(505) 252 – 4852** [natural.resources@sanipueblo.org](mailto:natural.resources@sanipueblo.org)

**Leonard Pino, Tribal Ranger (505) 238 – 6763** [ranger2@sanipueblo.org](mailto:ranger2@sanipueblo.org)

**Jose Aguilar, Tribal Ranger (505) 219 – 7552** [jaguilar@sanipueblo.org](mailto:jaguilar@sanipueblo.org)

# Pueblo de San Ildefonso 260 Acre HFR Project-BIL-2024





# Pueblo de San Ildefonso Office of Project Management

## Pojoaque Basin Regional Water System (PBRWS)

The Pojoaque Basin Regional Water System (PBRWS) is an important part of the Aamodt Settlement Agreement and will divert water from the Rio Grande. It includes a water treatment facility, along with storage tanks, pump stations, and transmission and distribution pipelines. As part of the project, vibration-monitoring activities will be undertaken to protect the property owner from any damage caused during construction.

*Un'be' ah'gi de, Towa-in',*

*E'toh na' Poh-su-wa-ge' Basin Regional Water System in'-ge oh-nay boh-wa', wee ha wee-ya poh ewaa'.*

*US Department of the Interior and Bureau of Reclamation de-cah'wa' in', nang DCM Construction, Inc., o-vah oh-ge, ne' toh da ah-me-in'.*

*J. Aimone Associates, LLC de-con-waa-in, in'-nang da-aa' yo' nae toh, CDM Constructors gee'. JAA in' nang oh din'ko' nae pre-construction condition surveys naa-mu ee', wa' un-be' taa' wah haa da' buu' wa'yo' nae toh-gee'.*

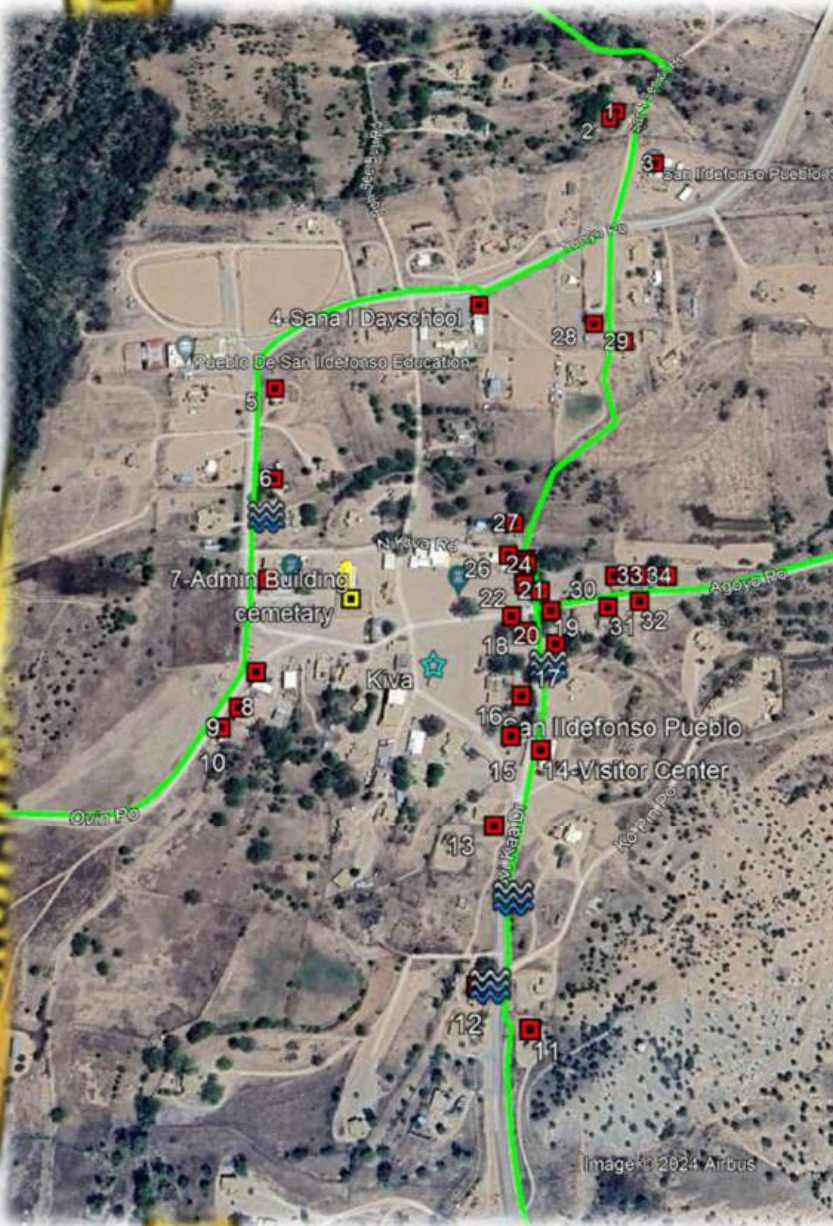
*Nai-he-wee da' caa-ma' in, da' ta' kuu-yo' un-be-tay-wah' in ge. Haa'-we de' taa-kuu ee un-be' taa-wah in, wa' boh-ya paa-uu' na-pa'de hay-de, taa'-ke da' cha-yo'.*

*Nai haa' we' da' kay-ma in', hah' toh ah-we da' kaa-veh aa' na'ue'. Nai ya, da' be' bu-waa' yo, be ah-de' baa', way kaa-ge aa' me'. Way-de' aa' de un-bee', be' hee' ah-me'.*

*Nang de' maa' ge oh, nai survey a' aa-me' in'. Nai survey ah-toh san-ge' we' hour na' mai', boh de-da' poh, un-wa' be yee'-ne' nang towa ah-de waa' de' oh-de'. De' gah boh wa' ding boh ee' a' de, wa' kaa-ya-ne', ah-dah' de' aa' in' un-be'.*

**\*\*Thank you Mr. Leon Roybal for your assistance in translating this very important message into Tewa.**

**\*\*Thank you Dr. Bernstein for your oversight of the Pueblo's cultural interests.**





# Pueblo de San Ildefonso Office of Project Management

## Hot News!

### SAN ILDEFONSO WASTEWATER TREATMENT (PHASE 3) PROJECT CONSTRUCTION UPDATE

The San Ildefonso Wastewater Treatment (Phase 3) Project will consist of an Orenco Advantex® treatment system, utilizing the Orenco AX-Max treatment unit. The new treatment system will serve the Main Village and be located near the existing lagoons.

The treatment system will be similar to the current treatment system in the Pajarito/Battleship Mountain housing area. The new treatment system is expected to benefit 118 homes and 9 tribal facilities and businesses. Design is approximately 20% complete. The as-built research, topographical survey and utility coordination has been completed. Souder Miller & Associates (SMA) has begun the sewer, lift station and wastewater treatment design. SMA has also begun the environmental and cultural data collection and Environmental Information Document (EID). SMA will submit a 30% Design Submittal next month for review. Construction is expected to around August 2025.

The as-built research, topographical survey and utility coordination has been completed. SMA has begun the sewer, lift station and wastewater treatment design. SMA has also begun the environmental and cultural data collection and Environmental Information Document (EID). SMA will submit a 30% Design Submittal next month for review.





# Transfer Station News

**\*\*Hours and closures are subject to change for holidays or at any time for many reasons.**

## HOURS OF OPERATION:

MONDAY	8:00 am TO 5:00 pm
TUESDAY	8:00 am TO 5:00 pm
WEDNESDAY	8:00 am TO 5:00 pm
<b>THURSDAY</b>	<b>- CLOSED -</b>
FRIDAY	8:00 am TO 5:00 pm
SATURDAY	8:00 am TO 5:00 pm

**CLOSED 12:00pm to 1:00pm**

## CLOSURES for February

**February 17th - President's Day**

## Be'po'wa've

### OUR NEW TEAM MEMBER

Hello, my name is Christopher Chavez. I'm 35 years old and born in Santa Fe, NM. I was raised in Vallecitos, NM and graduated school in 2009 from Mesa Vista High School.



My hobbies are working on cars, fishing, camping, or just being outdoors with my family.

I am now the new Transfer Station Assistant here in the Pueblo. I will be ensuring community members are putting the trash in the right bins and right places. If anyone needs help to toss anything in the trash, I'm here to help.

I really enjoy helping the community. I look forward to helping keep it clean and a safe environment for people and wildlife.

## NOTICE TO TRIBAL / COMMUNITY MEMBERS

The Transfer Station services and facility is established for Tribal Members and provides these services for FREE. The Pueblo covers cost for all waste that is transported out of the Pueblo, except for Recyclables. We **DO NOT** accept waste from businesses.

We have set guidelines and regulations of what is accepted and what is NOT, to ensure we don't incur unnecessary costs/fees. High cost items such as, OIL and TIRES, are a huge cost to dispose and transport, which can range from \$1,000 to \$8,000 for less than 10 tires. Hazardous waste and oil are just as expensive and hard to find facilities transport them.

The Transfer station is only a **temporary** holding place for trash to be sorted or held. A landfill is the final destination for trash that cannot be recycled. When possible, make sure to recycle and donate as much as you can before taking items to a Transfer Station or a landfill. We do provide alternate places for Tribal/community members that will accept specific waste, with no fees.

We expect anyone utilizing our facility to follow these guideline and regulations. Anyone who disposes waste that is not accepted, we will encourage proper disposal. Anyone who neglects and abuses our regulations and guidelines are subject to fines and suspension from the Transfer Station. This includes disposing non acceptable waste, leaving waste outside the facility or anywhere on Tribal land other than the Transfer Station (illegal dumping), and bring waste from outside residents or businesses.

We encourage you reach out to staff if you are unsure where to dispose of your waste or need assistance. If you have any questions about your waste, please contact any of our Transfer staff.



**We encourage community members to take advantage of the *FREE DAYS* at the Buckman Road Recycling & Transfer Station.**

# BURRT AND CAJA DEL RIO LANDFILL FREE DAYS AND CLOSURES

Buckman Road Recycling and Transfer Station, 2600 Buckman Road, 8:00 AM - 4:45 PM  
Caja del Rio Landfill, 149 Wildlife Way, 8:00 AM - 4:45 PM

## Recycle Tires



**THE FIRST FULL WEEKEND OF EVERY MONTH, SATURDAY AND SUNDAY.**

Limit 8 passenger tires per day. Tires from businesses will not be accepted.

## Residential Trash



**APRIL 12, SEPT 20**

Residential trash, rubbish, unwanted material, appliances, furniture, mattresses, carpet, building materials, tiles, bricks, concrete, and metals.

**Only at the Caja Del Rio Landfill  
NOT at BuRRRT. 7:00 am - 1:00 pm.**

## Electronic Waste



**1ST SATURDAY EVERY MONTH  
EXCEPT JAN AND DEC  
9:00 AM - 1:00 PM**

Computers, monitors, printers, TV's, small appliances and household electronics.

## BURRT is closed:



January 1  
April 20  
May 26  
July 4  
September 1  
November 27  
December 25

*Free Days are for residents only. No waste accepted from businesses.*

These dates are subject to change.

Check current info:  
[www.sfswwa.org](http://www.sfswwa.org)  
(505) 424-1850 ext. 150

## Green Waste



**THE FIRST WEEKEND OF MARCH, APRIL, MAY, JUNE JULY, AUGUST, SEPT AND OCT.**

Bring unbagged green waste to BuRRRT to be made into mulch.

## Household Hazardous Waste (HHW)



**1ST SATURDAY EVERY MONTH  
EXCEPT JAN AND DEC  
9:00 AM - 1:00 PM**

Household cleaners, automotive products, paint, solvents, poison, fertilizer, batteries, pool chemicals, fluorescent light bulbs, and hobby products.



# Transfer Station News

## How to Dispose of Cooking Oil and Grease

Frying up breakfast? Roasting your veggies in bacon grease for extra flavor? While cooking oil and grease add a savory taste to any meal, they can make a real mess in your kitchen. Make sure you know what to do with it after cooking, because incorrectly disposing of cooking oil can have expensive consequences, like an emergency call to your plumber.

### What to Do With Used Cooking Oil and Grease — Throw it Away!

The best way to dispose of cooking oil and grease is simple — throw it in the trash. Follow these steps to dispose of these hot liquids safely:

1. Let the oil or grease cool and solidify.
2. Once cooled, scrape the grease into a container that can be thrown away.
3. When the container is full, place it in a plastic bag to prevent leakage and then throw it in the garbage. For sustainability reasons, we recommend using a large container multiple times until it's full.

Once you've gotten rid of most of the grease, use a paper towel to wipe down all pots, pans and dishes that touched the oil before rinsing them in the sink. Even small amounts of leftover grease are dangerous to your plumbing system because they will build up over time.

### How to Dispose of Cooking Oil and Grease



For quick and easy disposal, you can turn the oil into a solid by mixing it with absorbent materials such as paper towels, sawdust, or cat litter.

This solid can then be easily disposed of in your household trash.

### WE DO NOT TAKE



### Buckman Transfer Station & Recycling Center Free TIRE Days

Every first weekend of the month. Drop off up to (8) tires for free for Santa Fe Residents

Please contact Transfer Station Attendant to help find a place to dispose.

### Transfer Station Contacts:

- ⇒ Roberta Trujillo, Transfer Station Attendant (505) 250-8297
- ⇒ Christopher Chavez, Transfer Station Assistant (505) 412-3158
- ⇒ Erin Martinez, Transfer Station Supervisor (505) 455-4121



Hello and Happy 2025!

We have lowered the prices on some of the current San I logo merchandise: fleece vests, denim shirts, t-shirts, duffel bags and backpacks.

Please be advised that there are limited quantities, sizes and colors of what he have available so we will not be able to put items on "hold".

Please stop by and see if there is anything that you could need or want.

Thank you for your continued support.

The Visitor Center Staff



## San Ildefonso Senior Center FEBRUARY 2025

Sunday	Monday	Tuesday	Wednesday	Thursday	Friday	Saturday
						1
2	3 Frito Pie w/ Ground Beef Beans Red Chili Garnish Fruit Milk	4 BEEF VEGETABLE STEW GARDEN SALAD BISCUITS FRUIT MILK	5 SPAGHETTI W/ MEAT SAUCE GARDEN SALAD STEAMED VEGGIES GARLIC TOAST FRUIT/MILK	6 GREEN CHILI CHEESE TORTILLA BURGER GARNISH BAKED FRIES FRUIT/MILK	7 BAKED TILAPIA STEAMED RICE COLE SLAW CORN ON THE COB FRUIT MILK	8
9	10 HAM MACARONI & CHEESE CASSEROLE GARDEN SALAD STEAMED VEGGIES BISCUITS FRUIT/MILK	11 Tuna Sandwich Garnish Tomato Soup Baked Chips Fruit Milk	12 CHICKEN TENDERS GARDEN SALAD STEAMED VEGGIES BAKED FRIES FRUIT MILK	13 Green Chili Chicken Enchilada Garnish Black Beans Corn Bread Fruit Milk	14 HAPPY VALENTINES SALAD/ BAKED POTATO BAR CHICKEN SALTINE CRACKERS FRUIT MILK	15
16	17 CLOSED  PRESIDENT'S DAY	18 SLOPPY JOE WW-BUN BAKED CHIPS GARDEN SALAD FRUIT MILK	19 Beef Fajitas Onions Pinto Beans Tortilla Salsa Fruit Milk	20 PORK CHOP SCALLOPED POTATOES BROCCOLI ROLL Fruit / Milk	21 PIZZA GARDEN SALAD STEAMED VEGGIES FRUIT MILK	22 MENU IS SUBJECT TO CHANGE IF FOOD ITEMS ARE NOT AVAILABLE
23	24 CHICKEN FRIED STEAK BAKED POTATO STEAMED VEGGIES FRUIT MILK	25 SMOTHERED BEAN & BEEF BURRITO RED CHILI GARNISH STEAMED VEGGIES FRUIT MILK	26 GRILLED CHICKEN SANDWICH TOMATO SOUP BAKED FRIES FRUIT / MILK	27 TACO BOWL GARNISH FRUIT MILK	28 BREAKFAST BURRITO HASH BROWN YOGURT FRUIT MILK	SENIOR CENTER (505) 455-7326

# FEBRUARY 2025

## San Ildefonso Senior Center

Sunday	Monday	Tuesday	Wednesday	Thursday	Friday	Saturday
						1
2	3	4	5 SENIOR PLANNING SESSION FOR THE MONTH OF MARCH 5:30 SENIOR LIVING ROOM	6	7 HEALTHY HEART NATIVE AMERICAN DAY AT ISLETA RESORT /CASINO <b>SIGN UP</b> ----- NATIVE AMERICAN DAY AT THE LEGISTATURE SANTA FE <b>SIGN UP</b>	8
9	10	11 PEACEKEEPERS 11:30	12 CHR SCREENING <u>11:30/12:30</u>	13	14 VALENTINE'S DAY SENIOR LUNCHEON 11:30	15
16	17 CLOSED PRESIDENT'S DAY	18	19	20 BAKING DAY WITH SENIORS	21	22 <u>EVENTS ARE SUBJECT TO CHANGE</u>
23	24	25 SENIOR TAX PREPARATION 10:00 SENIOR CENTER	26 CHR SCREENING <u>11:30/12:30</u>	27	28	SENIOR CENTER (505) 455-7326



## Health and Human Services February Newsletter

- HHS team is grateful for another feast bringing the community together. We look forward to a year of good health and community togetherness.
- Santa Clara Health Clinic has resumed pharmacy services as of January 27<sup>th</sup>. You may now call in medications there for pick up by our team. Please be sure to keep an eye out for the call for medication pick up sent out through the community blast. We appreciate everyone continuing to call during office hours or email to have medications picked up.
- HHS will be hosting a “Love Yourself” event on Thursday, February 27<sup>th</sup>. See attached flyers for this event, another highlighting San Ildefonso Senior Olympians, and the Valentine’s Day Senior event on February 14<sup>th</sup>.
- Lastly, San Ildefonso’s Health Council was featured in the Santa Fe New Mexican as an effort to support recurring and increased funding for local and tribal Health Councils throughout the State. Governor, Tribal Council, and staff continue to advocate at the State Legislature for this cause. Thank you.



*Love*

# ***YOURSELF***

Using your physical and emotional senses  
to experience and enjoy food choices

**DATE: February 27, 2025**

**TIME: 5:30PM**

**LOCATION: San I Gym**

**Dinner provided**



**PRESENTATION BY ANTHONY  
WILLERT RDN, LD**



## Pueblo de San Ildefonso

### Tewa Language Program

Bah-be-boh Po-woh-geh Towa in',

Our pueblo, Poh-woh-geh Owinge, as been here since time immemorial, and we are all proud of who we are and where we come from. As most of you might know, especially our tribal elders, who still speak our Poh-woh-geh Tewa Tunn, have a certain knowledge that is held in trust within each of them. They have that distinct speech and knowledge that is within our tribal language, and it is truly wonderful when you hear them talk the language, and how it flows out of their tongues. There is truly a different meaning when speaking our native language, than using English.

But sadly, we are not hearing that so much anymore, and when our elders speak, I would estimate that at least MAYBE 75% +/- (it's a guess) of our people may not be understanding what is being said in Tewa. I say we are at a crisis whether we realize it or not. From our last language survey that was done about maybe six years ago, the results did not look so good then. I do not wish that our Tewa language go silent, that would be devastating, to say the least for our future of our children and pueblo.

Let me give a quote from a book, *"The Language Warrior's Manifesto"*, by Anton Treuer." He says, *"In our own circles, the language is critical for cultural community. Most of our ceremonies are conducted exclusively in our tribal languages. To lose the language is to lose our ceremonial medium, and in many cases the ceremonies themselves. The deepest levels of meaning are the most potent, in everything from medicines to nuanced ceremonial and religious content, and in many cases those levels can only be reached through a living language."*

If we consider ourselves a "traditional" pueblo, then I believe that language is the most important traditional part of us. As I have heard many tribal leaders and people who teach native languages at conferences say..." *Who are we, without our traditional languages?"*

The Tewa Language Program (TLP) shared a booth with the Tribal Historic Preservation Office during the 2024 Santiago Day activities, the TLP had a sign-up sheet for the upcoming language classes that was being offered to start in September, we had at least 40 people signed up for classes, but in the end when we started in October there were probably only 10 people who participated and slowly the numbers dwindled down. We had two adult/adolescent classes and one for our Head start children.

I would like to invite and encourage anyone again to take the classes. We will start again the week of February 17 2025, so please come and also encourage others like your children, relatives and friends to come and learn more of your Tewa language. I also encourage anyone who is a confident/assured speaker to come and say that you would like to teach the language. PLEASE!!! There is no requirement to teach, just that as long as you have the confidence, courage, motivation and ideas to teach. There is always room for learning and improving your skills. I encourage all to take part in this. We have our variances, but let's go beyond that for the sake of our current and future generations to pick up our Poh-woh-geh Tewa Tunn' and carry it into the future, so that it will never go silent!!

Kun-da-woh-ha for your attention to this dire matter, we know in our heart is a necessity. Please do call my office for sign-up, I'm located at the DECP building, my office number is 505-455-4170 and my email address is at: [Tewalangmgr@sanipueblo.org](mailto:Tewalangmgr@sanipueblo.org). Be safe and *May Our Creator bless you all always!!*

AwaTside', aka: Leon Roybal



## San Ildefonso Library

Phone: (505) 455-2635

Fax: (505) 455-2641



**Aaliyah Gonzales**

Librarian/ASP Coordinator

[agonzales@sanipueblo.org](mailto:agonzales@sanipueblo.org)

**Rick Juliani**

Education Director

Cell: (505) 321-9694

[rick.juliani@sanipueblo.org](mailto:rick.juliani@sanipueblo.org)



**Bernice Martinez**

Education Manager

Cell: (505) 660-0149

[bmartinez@sanipueblo.org](mailto:bmartinez@sanipueblo.org)



**Katerie Martinez**

Home Visitor

Ph: (505) 455-4140

[homevisitor@sanipueblo.org](mailto:homevisitor@sanipueblo.org)



**Melissa Torres**

College & Career Readiness Coord.

Ph: (505) 455-4167

[mmedina@sanipueblo.org](mailto:mmedina@sanipueblo.org)



## VISIT OUR WEBSITE

[www.sanipueblolibrary.org](http://www.sanipueblolibrary.org)

To sign up for a library card

& check out our resources

Patrons with a Library card

have access to 1000s of

articles from newspapers

across the USA through

America's News

Find  
reliable  
information  
on any topic.



NewsBar

America's News

February, 2025

## Education Department

Education Department



## EARLY CHILDHOOD COMMUNITY MEETING

Wednesday, February 5, 2:00 PM @ Library

JOIN US AS WE PLAN EARLY CHILDHOOD  
SERVICES @ San Ildefonso

## HAPPENING NOW



## HOME VISITING PROGRAM



NOW VISITING with PARENTS/EXPECTING PARENTS OF YOUNG CHILDREN (0-5)

**This Month's Dinner & Family Event: Tuesday, Febr 6 @ 5:30 pm**

For more details and how to join, contact Katerie Martinez

or go to the San I Home Visiting Facebook page

## COMING SOON ...

## SPRING TOUR!!!

THE EDUC DEPT WILL BE HOSTING 3-DAY SPRING BREAK BUS TOURS TO VISIT  
COLLEGES/VOCATIONAL SCHOOLS (March & April) for High School students

Campus visits planned to: IAIA, SFCC, SIPI, CNM, UNM & more !!

For sign-ups, contact the Education Department (455-2635)

## COLLEGE/CAREER SERVICES

## FAFSA SUPPORT

**Need FREE money to pay for more school ???**

(vocational, technical/trades, or college)

Get help completing Free Application for Federal Student Aid (FAFSA)

See Melissa at the San I Library (9:30 am-5:30 pm @ Tuesdays-Fridays)

## SCHOLARSHIPS

FOR LIST OF SCHOLARSHIPS TO FUND YOUR CONTINUING EDUCATION,  
GO TO OUR WEBSITE, COME TO THE LIBRARY, OR email:

[educationsanip@gmail.com](mailto:educationsanip@gmail.com)



# ENIPC ADULT VOCATIONAL TRAINING PROGRAM



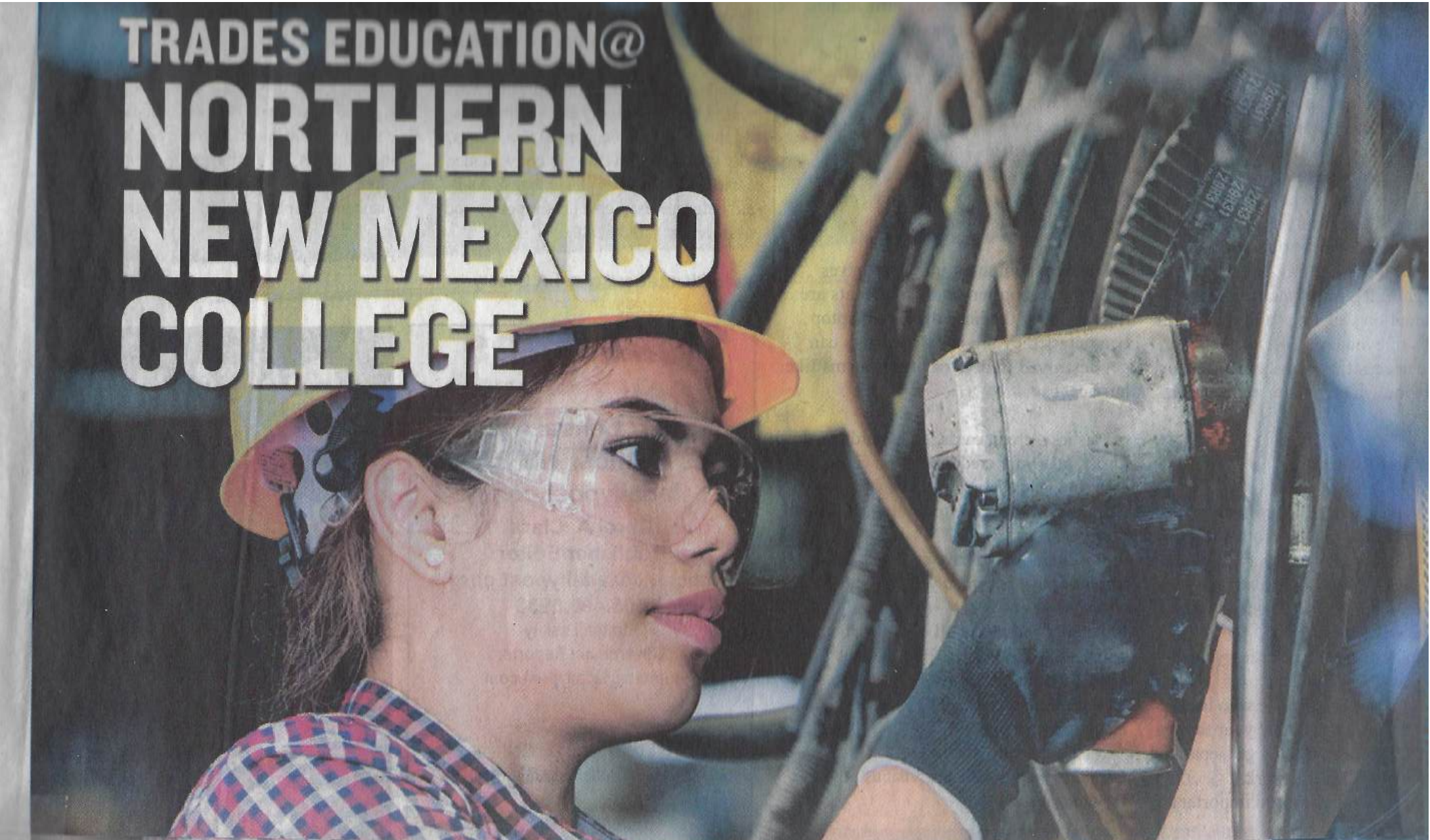
- SEEKING VOCATIONAL TRAINING OPPORTUNITIES?
- SEEKING EMPLOYMENT RELATED SERVICES?
- ENROLLED IN AN ASSOCIATE'S DEGREE?
- TRADE SCHOOL OR APPRENTICESHIP PROGRAM HAPPENING NOW?
- FINANCIAL ASSISTANCE AVAILABLE FOR THOSE ENROLLED IN HIGHER ED OR TRADE SCHOOL

**APPLY NOW!**

**WWW.ENIPC.ORG --  
EDUCATION PROGRAMS  
EDUCATION@ENIPC.ORG  
505-692-2056**

CONTACT OUR PROGRAM TO DISCUSS  
HOW YOU ARE ELIGIBLE FOR BENEFITS &  
SUPPORT!





TRADES EDUCATION@  
**NORTHERN  
NEW MEXICO  
COLLEGE**

**PLUMBING, PIPEFITTING, ELECTRICAL TECHNOLOGY  
PLUS COMING SOON: WELDING, HVAC & CARPENTRY  
APPLY TODAY! CALL 505.747.2111 OR VISIT [NNMC.EDU](http://NNMC.EDU)**

\$110/credit, Financial Aid and NM Opportunity Scholarship (free college) eligible!

# CAREER

# GUIDANCE



TUESDAY - FRIDAY 9:30A - 5:30P



SAN ILDEFONSO PUEBLO LIBRARY

## GET HELP WITH



Finding career opportunities for employment or advancement



Master interview skills by reviewing and answering sample interview questions



Resume and cover letter writing



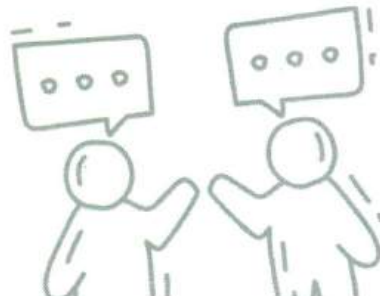
Career exploration



MELISSA TORRES

505-455-4167

[MMEDINA@SANIPUEBLO.ORG](mailto:MMEDINA@SANIPUEBLO.ORG)





# Once Upon a Time Father - Daughter Dance

*Event is open to daughters of all ages, and their  
father figure.*

*Gentle Reminder: Mother figures not allowed, event is for  
father figures and daughters to enjoy a special night.*

Saturday Feb 8, 2025

Dance 6pm-8pm

Tewa Center

*Theme: Princess Royalty*

Attire: Semi Formal

Dinner and a special treat  
will be provided to the first

50 F&D who RSVP.

Dance is open to ALL  
Father- Daughters no  
rsvp needed.

Dancing-Refreshments-Pictures-Prizes

RSVP to Katerie Martinez 505-795-1125

No later than FEB 3, 2025



SERNA SOLUTIONS  
Counseling • Coaching • Consulting



# Vacancy Announcement

**Excellent Career and Benefits Opportunities**

**Come and Join our Team!**

Full Time Positions offers a wide range of excellent fringe benefits:

- Healthcare (medical, dental, vision)
- Annual Leave
- Sick Leave
- Paid Holidays
- Basic Life Insurance
- Short Term, Long Term, AD&D Insurances
- On-the-job training and skills development
- Employee Assistance Program
- 401K

**Pueblo de San Ildefonso is seeking qualified applicants for the below positions. All positions are open until filled**

**Tribal Ranger (Full-Time) Open Until Filled**

**Assistant Controller (Full-Time) Open Until Filled**

**Project Manager Administrative Assistant (Full-Time) Open Until filled**

**Driver for Senior Outings (As needed)**

**Contact Human Resources at (505)-455-4155 or (505) 455-4112 for Job Description or for more information. Employment Applications are available on the website at [www.sanipueblo.org/jobs](http://www.sanipueblo.org/jobs)**



# San Ildefonso Housing Authority

## BUSINESS HOURS:

Mon.	7:30 AM	to	4:30 PM
Tues.	7:30 AM	to	4:30 PM
Wed.	7:30 AM	to	4:30 PM
Thur.	7:30 AM	to	4:30 PM
Fri.	7:30 AM	to	4:30 PM
Sat.	CLOSED	to	CLOSED
Sun.	CLOSED	to	CLOSED

## SIHA STAFF CONTACT INFO:

**Lisa Manwell, Executive Director**  
[director@sanihousing.org](mailto:director@sanihousing.org)  
(505)455-4161

**Christopher Romero, Building Services Manager**  
[buildingmanager@sanihousing.org](mailto:buildingmanager@sanihousing.org)  
(505)479-0399

**Devan Martinez, Housing Manager**  
[officemanager@sanihousing.org](mailto:officemanager@sanihousing.org)  
(505)455-4162

## BOARD OF COMMISSIONERS

*Julie Sanchez, Chair*

Term expires: 12/31/24

*Shannon Titla, Vice Chair*

Term expires: 12/31/24

*Kevin Naranjo, Secretary*

Term expires: 12/31/25

*Victoria Martinez, Treasurer*

Term expires: 12/31/25

*Danielle Keener-Garcia, Member*

Term expires: 12/31/26

## HOUSING APPLICATIONS

San Ildefonso Tribal Members are welcome to stop by the SIHA Office and pick up applications during business hours. You may choose between rental or homeownership opportunities. SIHA is focused on growing its waiting list for grant applications to better understand and document the housing needs of our Tribal Members. If you have any questions, please contact Devan Martinez, Housing Manager at the SIHA Office.

### Deer Tail Phase II Applicants - HOMEWISE

**UPDATE on credit pulls:** Starting the week of 1/21/25, Homewise can now use “soft pull” credit reports for clients in coaching to seek a mortgage loan pre-approval. Once under contract on a new home and working with a loan officer, there will be at least one “hard credit pull”. A soft pull doesn’t count as an “inquiry” on a credit report and doesn’t affect your score. A hard pull is an official inquiry and will show on your list of recent inquiries with each credit bureau and may take 3-5 points off your credit score—most people get these points back within 30-60 days which is 1 to 2 credit cycles. Having a credit check is industry standard when seeking a loan and a necessary part of the process. Please reach out with any questions to Rachael Gilman via email at [rgilman@homewise.org](mailto:rgilman@homewise.org) or by phone (505) 955-7028.

### Deer Tail Phase II Leasing and Mortgage Update

The Pueblo de San Ildefonso Tribal Council approved the *Leasing and Mortgage Act of 2024* on December 13, 2024. This Act grants the San Ildefonso Housing Authority (SIHA) the authority to create leasing regulations for the use of tribal trust and restricted lands for mortgage purposes. A Notice regarding a Twenty Day Comment Period for the Residential Lease and Mortgage Regulations was posted on January 14, 2025, and can be found at the SIHA office, the Tribal Administrative Office, and the DECP Building. The comment period will close on February 3, 2025, at 5:00 p.m. All comments submitted will be reviewed and considered in finalizing the regulations. SIHA intends to hold a special Board meeting to adopt the regulations.

### Battleship View

SIHA is thrilled to celebrate an incredible milestone! Five residents of Battleship View officially paid off their homes! What an amazing way to kick off the New Year as proud homeowners!

**CONGRATULATIONS!**



# *San Ildefonso Housing Authority*

## **Emergency Assistance for Electrical, Plumbing, & Roofing**

### **Enchanted Electrical, LLC**

505-988-3532

### **TLC Plumbing, HVAC, & Electrical**

505-471-0119

### **George Carmona Plumbing**

505-660-3655

### **Relentless Roofing**

505-967-9032

### **Splendid Builders & Roofing**

505-930-8302



**\*Homeowner is responsible for any and all costs provided from these services\***

## **Central New Mexico Housing Corporation**

***Great Opportunity:*** Free Weatherization Services for Low-Income Families! These services include sealing gaps around doors and windows, adding insulation, and insulating water heaters and hot water pipes, plus MORE! Several San Ildefonso Tribal Members have already benefited from this fantastic program. *You could be next!* Applications for San Ildefonso Tribal Members are currently being processed quickly. If you need a PDF version of the application, feel free to contact Devan Martinez, Housing Manager, at [officemanager@sanihousing.org](mailto:officemanager@sanihousing.org). You can also visit the SIHA office to pick up a hard copy.

## **AMERIND INSURANCE**

Explore home insurance opportunities with AMERIND Risk Management, the only insurance provider in Indian Country that is completely Tribally owned. For an application, visit the SIHA office or find more information at [www.amerind.com](http://www.amerind.com).

## **HELPM**

HELPM provides essential emergency support, including help with rent and utility payments, wood vouchers, job placement services, work experience opportunities, and GED programs. They also assist individuals in buying work boots and uniforms. The organization offers referrals to a broad spectrum of services, and some staff members are now trained to assist with Social Security, SNAP, and LIHEAP applications. Plus, they have a CACFP (Child and Adult Care Food Program) and a housing program. **Contact Stephanie Macias at (505) 871-4318 or via email [stephanie.macias@helpm.com](mailto:stephanie.macias@helpm.com)**

## **Maintenance on Private Homes**

It is the homeowner's responsibility to maintain their residence. SIHA may provide support for emergency maintenance concerns that impact *health and safety* during the hours of 8:00 a.m. to 3:00 p.m., Monday through Friday. It is important for homeowners to understand that there may be costs involved, as the existing operating funds are allocated specifically for managed units.



# *San Ildefonso Housing Authority*

## Question and Answer –

### **1. Is Deer Tail Phase II (DTP2) Complete?**

The roads, drainage and homesite pads are complete, due to funding SIHA had to contract the electric, gas and communications installation separately. SIHA is now working with WH Pacific engineer to get the procurement process moving forward.

### **2. Are DTP2 homesites available to any tribal member?**

Yes, if a tribal member is interested in obtaining a Section 184 loan a San Ildefonso Tribal Member may apply for a homesite. The process will be outlined in the SIHA Residential and Mortgage Rules and Process.

### **3. Will SIHA have construction of new homes at DTP2?**

Yes, right now, SIHA is planning to start with 10 manufactured homes (5 – 3 Bedroom & 5 – 4 Bedrooms).

### **4. When will the SIHA Residential and Mortgage Rules and Process be approved?**

SIHA will schedule a special Board meeting for the week of February 10<sup>th</sup>, thereafter SIHA will make an announcement on the process of what's next.

### **5. How do I know if I qualify for the DTP2 homeownership project?**

- You submitted an application with SIHA
- You completed Financial Literacy and Homebuyer Education classes through Homewise.
- You made an appointment with Homewise to meet with a coach that will conduct intakes of tribal members to develop client profiles, determine mortgage affordability, and prepare them to become pre-approved for a mortgage to buy a home. For tribal members in need of home buyer readiness support, coaches will also develop an action plan as a pathway to homeownership. Homewise Coaching may include topics such as improving credit scores, disputing credit report errors, reducing debt, enhancing savings, and other areas customized to the individual client.
- It is your responsibility to complete all items listed above

SIHA is a partner with Homewise, Inc. that serves as a non-profit and Community Development Financial Institution (CDFI) serving New Mexico to assist through the process for the DTP2 project. To make an appointment you may contact Kenneth Brown, Home Purchase Advisor at (505) 795-7581 or via email [kbrown@homewise.org](mailto:kbrown@homewise.org)





# *San Ildefonso Housing Authority*

## **6. Does SIHA have funding to provide financial assistance to obtain a home?**

Yes, SIHA was awarded the Indian Community Block Grant (ICDBG) for Mortgage Buy Down and has funding for Down Payment Assistance and/or Closing cost, the amount of assistance is based on Income eligibility (income includes anyone over the age of 18 listed on your application) per the ICDBG guidelines.

<b>INCOME LIMITS</b>		
<b>Family Size</b>	<b>80% of USMI</b>	<b>80% of AMI - Santa Fe</b>
1	\$ 50,400	\$ 47,800
2	\$ 57,600	\$ 54,600
3	\$ 64,800	\$ 61,450
4	\$ 72,000	\$ 68,250
5	\$ 77,800	\$ 73,750
6	\$ 83,600	\$ 79,200
7	\$ 89,300	\$ 84,650
8	\$ 95,100	\$ 90,100
9	\$ 100,800	\$ 95,550
10	\$ 106,600	\$ 101,050

## **7. How much longer will it be before tribal members are contacted for DTP2?**

It is SIHA's plan to have the process in place within 90 days, be assured the SIHA staff, Board and SIHA legal counsel are working together to get the process in place and to ensure everything is done correctly.

SIHA appreciates your patience and understanding, if you have questions you may call the SIHA office at (505) 455-4161 or 4162 and are welcome to stop by the SIHA Office during business hours.

# BLACK MESA BEHAVIORAL HEALTH

29 ODO PO

MONDAY – FRIDAY 9am to 5pm

---

**SANTANA TITLA, LADAC**  
Program Director  
[santana@sernasolutionsllc.com](mailto:santana@sernasolutionsllc.com)  
505-370-7499



**ERIN LYLES, LMHC**  
[erin@sernasolutionsllc.com](mailto:erin@sernasolutionsllc.com)  
505-886-7838  
(MONDAY 9AM TO 5PM)

**ADAM BACA, LPCC**  
[adam@sernasolutionsllc.com](mailto:adam@sernasolutionsllc.com)  
505-405-9771  
(WED 8AM TO NOON)



**SHANNA PARKER, LPCC, LADAC**  
PROGRAM CONSULTANT  
[shanna@sernasolutionsllc.com](mailto:shanna@sernasolutionsllc.com)  
505-570-5656  
(THURSDAY 10AM TO 4PM)

Make a referral online via the Serna Solutions website:

[www.sernasolutionsllc.com](http://www.sernasolutionsllc.com)

**505-370-7499**



**SERNA SOLUTIONS**  
Counseling • Coaching • Consulting

Black Mesa  
Behavioral Health



PRIVATE & PROFESSIONAL COUNSELING  
29 ODO PO, SAN ILDEFONSO PUEBLO  
505-370-7499  
A partnership of Serna Solutions and Pueblo de San Ildefonso

For the next 24 hours speak hopefully about everything, about your job, children, partner, health, and about your future.



Mourning is more than recovering from death, it is recovering life. We chase after solice, resolution-an end to the pain. There is nothing to chase after. To find life again, we need only go back to ourselves.



Asking for help  
However, one cannot put a gallon in a cup. My cup runneth over may in some contexts be a declaration of disaster. Emptying is fully as important as filling.



love is like the wind, you can't see it but you can feel it.



We can't become what we need to be by remaining what we are.  
-Oprah



Everyone you will ever meet knows something you don't.  
-Bill Nye



In dealing with fear, the way out is in  
-Sheldon Kopp



*Love*




Every day practice emptying your mind of all unhealthy attitudes





# RECOVERY CORNER

## Add to our understanding of terms



01

### **SOBRIETY**

The state of being free from the effects of alcohol or drugs. Example: not having consumed any substance today so "I'm sober today"

02

### **RECOVERY**

A process of improved physical, psychological and social well being and health after having suffered from a substance-related condition. Example: being sober, actively, consistently improving overall health and wellbeing over a period of time.

03

### **MINDFULNESS**

A type of meditation that involves being aware of your current thoughts, feelings, and bodily sensations without judgement.

04

### **IOP**

Intensive Outpatient Program is a type of structured and intensive treatment for mental health issues or substance abuse

05


### **OUTPATIENT SERVICES**

Services provided to person outside of a hospital, clinic or inpatient facility.

06

### **INPATIENT SERVICES**

Services provided in a facility, clinic, or hospital

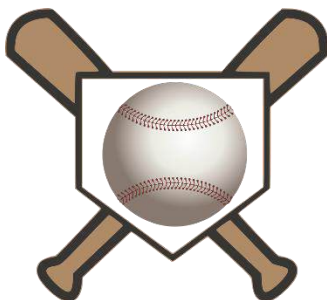


Black Mesa  
Behavioral Health



PRIVATE & PROFESSIONAL COUNSELING  
29 ODO PO, SAN ILDEFONSO PUEBLO  
505-370-7499

A partnership of Serna Solutions and Pueblo de San Ildefonso



Little League Players needed, grades 5<sup>th</sup> and 6<sup>th</sup>.

Located in Pojoaque for the 2025 Spring  
Season. Players interested, contact Coach  
Manuel Martinez @ (505)-929-9178;

Email: [manzmtz@gmail.com](mailto:manzmtz@gmail.com).

Pojoaque Little League is also seeking players  
for all ages, baseball and softball.

Let's play hard, have fun, and never give up!