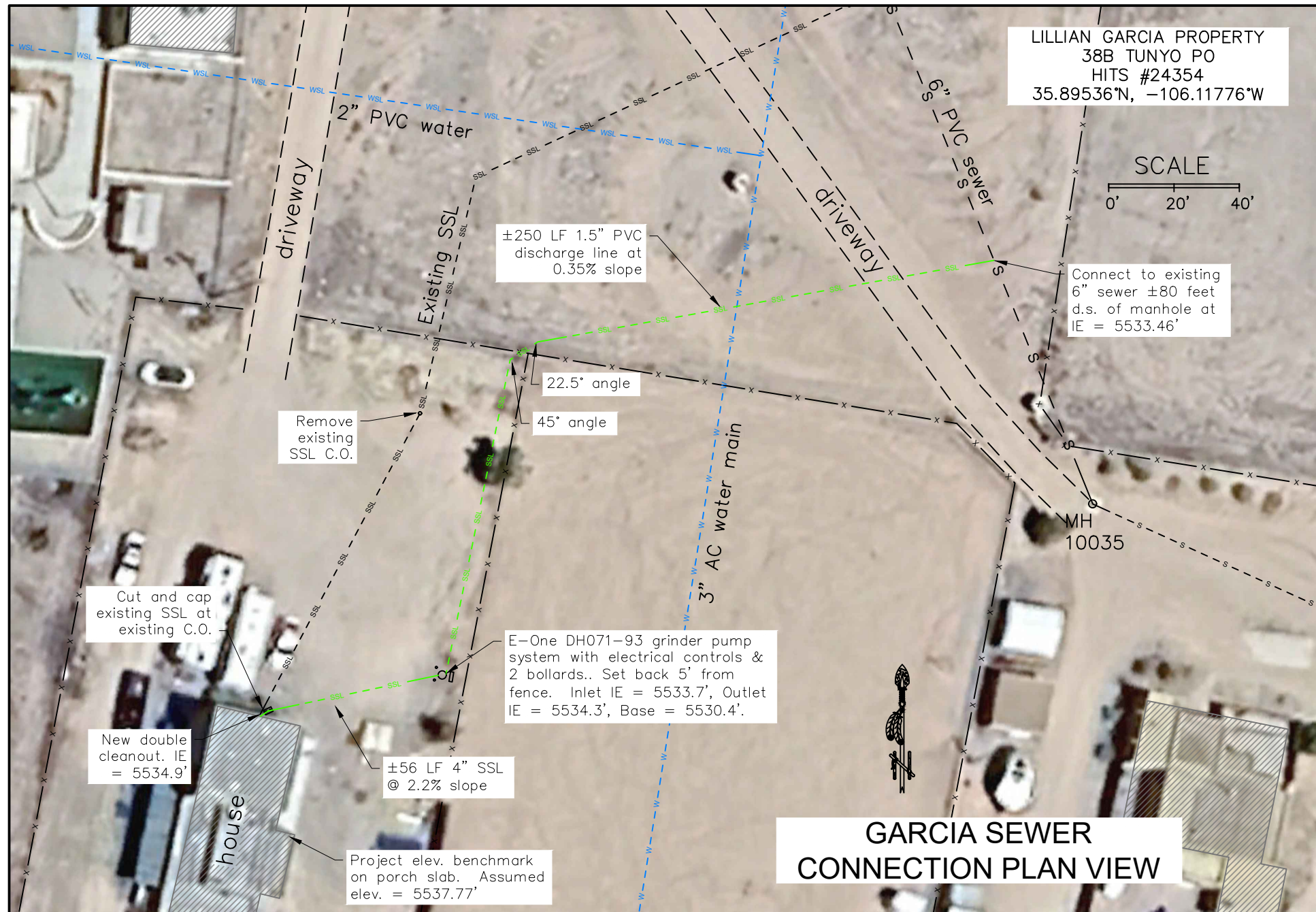
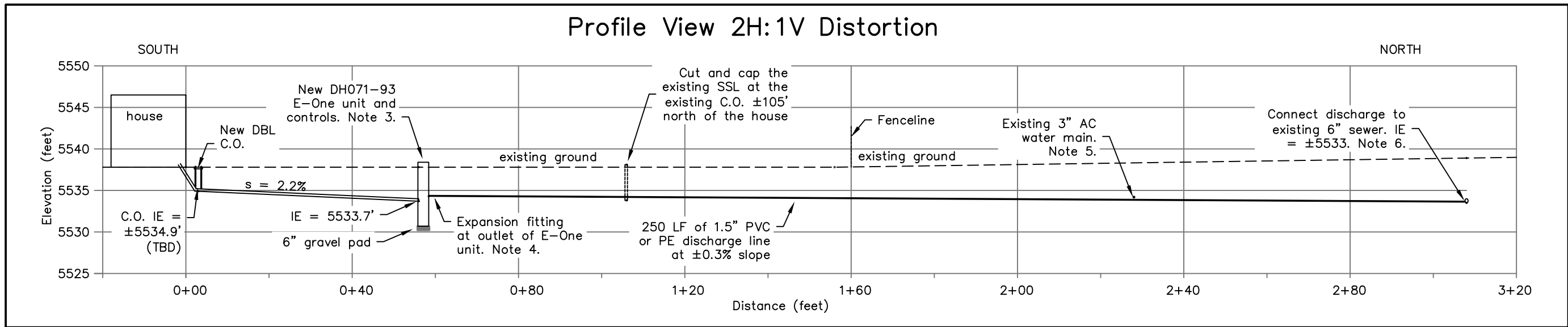








# Profile View 2H:1V Distortion



**Notes**

- The system shall be constructed per applicable provisions of IHS TP-13 "Individual Pressure-Dosed Sewage Disposal System." Refer to Detail sheets for details on system components.
- Install new 4" SSL from the existing house stub-out at minimum 2% slope. Contractor to verify existing stub-out invert elevation (IE).
- Install a DH071-93 E-One grinder pump unit or equivalent and controls per manufacturer's specs. IE of outlet = 5533.7', IE outlet = 5534.3. Contractor may vary elevations to allow for a min. 2% slope on the inlet SSL. Install power supply and pump controls per TP-1304 and vendor's specs (see Detail Sheet). Set the control panel as shown, about 50 LF from the house connection.
- Install a 1.25" to 1.5" expansion fitting at the outlet of the E-One unit and connect to 1.5" effluent line.
- Approx. location of water main is shown. Location & depth to be verified by the contractor. Place concrete around effluent line if it crosses above the water main.
- Connect the discharge line to the existing 6" sewer lateral. Assumed IE at connection = 5533.5'.
- The project elevation benchmark is the NE corner of the house porch slab. Assumed elev. = 5537.77'. The contractor shall survey additional benchmarks as needed for project construction.

INIT.	
REVISIONS	
DATE	
INDIAN HEALTH SERVICE OFFICE OF ENVIRONMENTAL HEALTH & ENGINEERING	
SANITATION FACILITIES CONSTRUCTION 1700 CERRILLOS ROAD SANTA FE, NM 87505 (505) 946-9570	
<b>2025 Individual Wastewater Disposal Facilities</b> San Ildefonso Pueblo L Garcia Work Site Plan & Profile Views (Sched. A) PUBLIC LAW 86-121 AL-23 C-77 & AL-24-D33	
DRAWN BY: I. Slocum 12-24	FILE NAME:
CHECKED BY:	LAYOUT NAME:
APPROVED BY:	PROJ ENG: I. Slocum SCALE: As noted
SHEET	
3	9







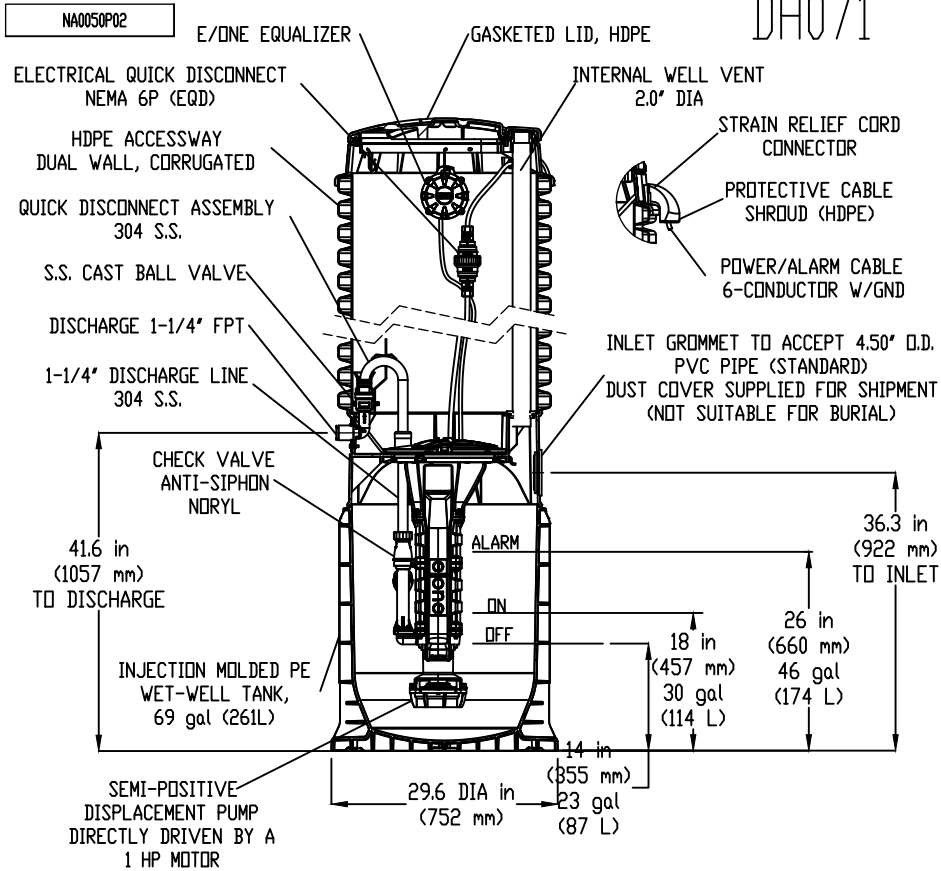






Contractor to supply two E-One grinder pump systems or equivalent grinder pump systems per approval by the engineer.  
 Dimensions of the E-One unit for Schedule 1 (Garcia) is DH071-93.  
 Dimensions for Schedule B (Martinez) is DH071-74

# GRINDER PUMP AND SEWER CONNECTION DETAILS

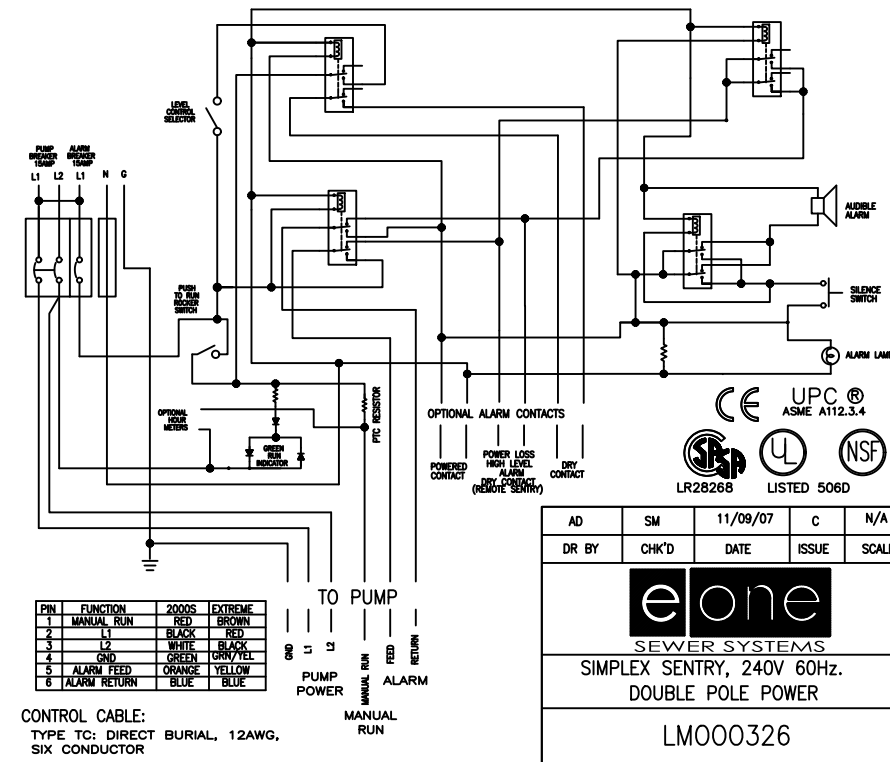
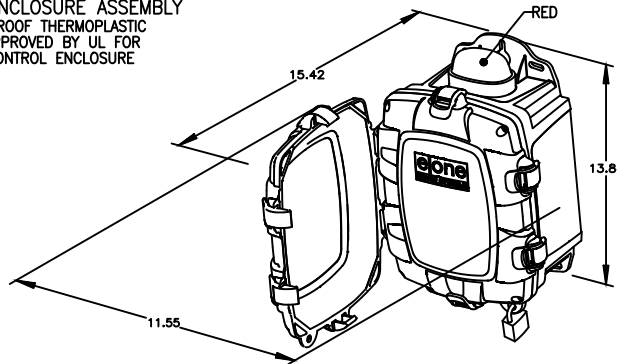


DH071

## SIMPLEX SENTRY

REDUNDANT RUN (HIGH LEVEL)  
 EXTERNAL VISUAL & AUDIBLE ALARM  
 EXTERNAL LATCHING MANUAL SILENCE  
 MANUAL RUN  
 PUMP RUN INDICATOR  
 CONFORMAL COATED CIRCUIT BOARD  
 PADLOCK  
 NEMA 4X ENCLOSURE ASSEMBLY  
 CORROSION PROOF THERMOPLASTIC POLYESTER APPROVED BY UL FOR ELECTRICAL CONTROL ENCLOSURE

- OPTIONS:
- ALARM CONTACTS
  - HOUR METER



AD	SM	11/09/07	C	N/A
DR BY	CHK'D	DATE	ISSUE	SCALE

**eone**  
SEWER SYSTEMS  
SIMPLEX SENTRY, 240V 60Hz.  
DOUBLE POLE POWER

LM000326

NOTE: DIMENSIONS ARE FOR REF ONLY  
 CONCRETE BALLAST NOT REQUIRED

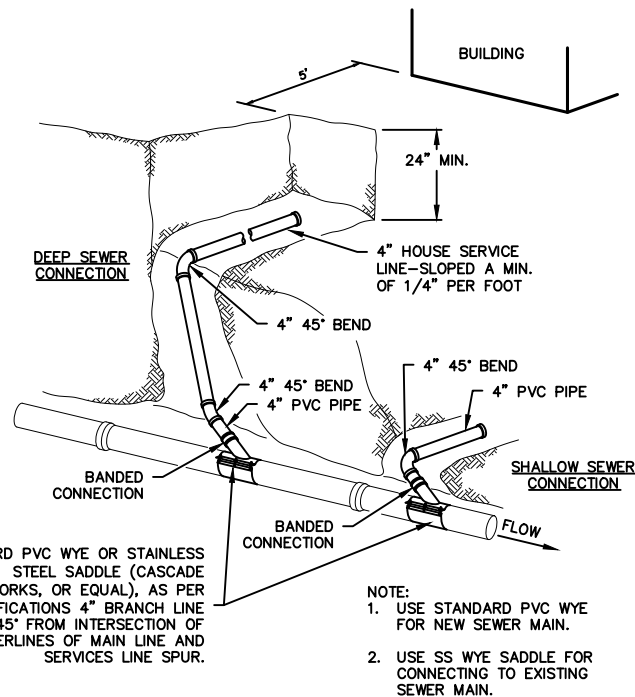
FIELD JOINT REQUIRED FOR MODELS  
 DH071-129 / DH071-160

JVL	SGS	7/14/2023	F	116
DR BY	CHK'D	DATE	ISSUE	SCALE

**eone**  
SEWER SYSTEMS  
MODEL DH071  
DETAIL SHEET



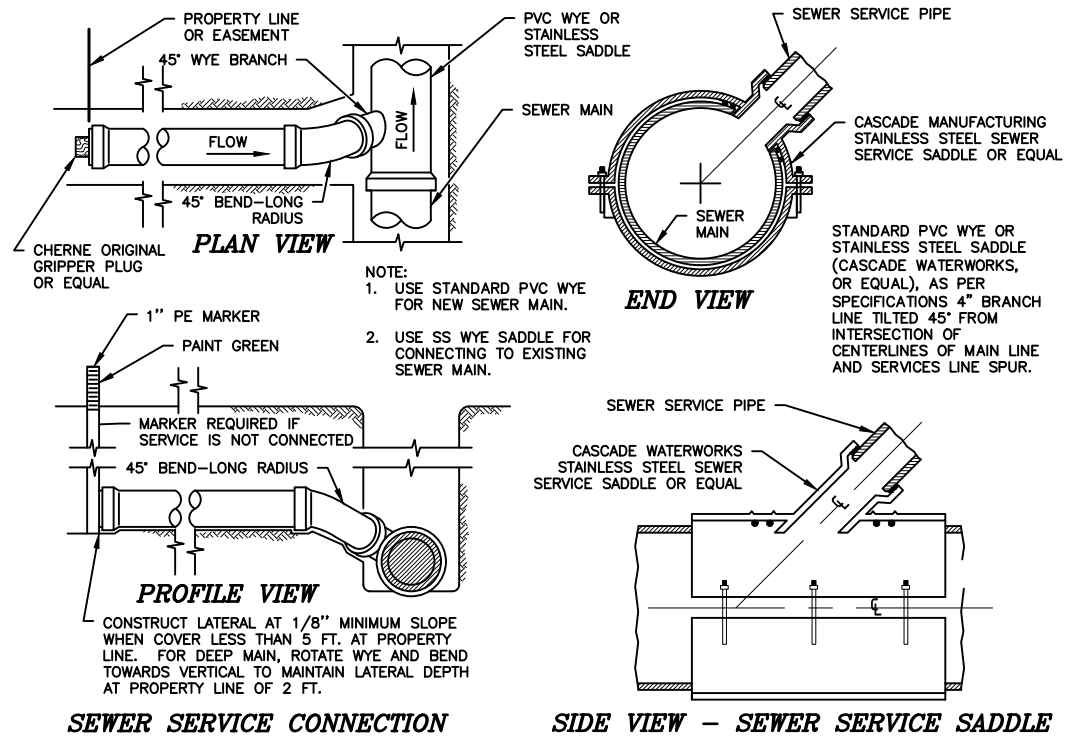
**IHS NOTES:**  
 1. REFER TO E-ONE PRODUCT DRAWINGS IN THE TECHNICAL PROVISIONS FOR DIMENSIONS OF MODELS DH071-74 (MARTINEZ SITE) AND DH071-93 (GARCIA SITE).  
 2. INSTALL A 1.25" TO 1.5" EXPANSION FITTING AT OUTLET OF E-ONE UNIT TO FIT THE 1.5" EFFLUENT LINE



STANDARD PVC WYE OR STAINLESS STEEL SADDLE (CASCADE WATERWORKS, OR EQUAL), AS PER SPECIFICATIONS 4" BRANCH LINE TILTED 45° FROM INTERSECTION OF CENTERLINES OF MAIN LINE AND SERVICES LINE SPUR.

- NOTE:
- USE STANDARD PVC WYE FOR NEW SEWER MAIN.
  - USE SS WYE SADDLE FOR CONNECTING TO EXISTING SEWER MAIN.

7B SEWER SERVICE CONNECTION  
NTS



SEWER SERVICE CONNECTION

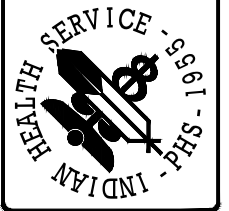
SIDE VIEW - SEWER SERVICE SADDLE

7C SEWER SERVICE CONNECTION  
NTS

NO.	REVISIONS	DATE

INDIAN HEALTH SERVICE  
 OFFICE OF ENVIRONMENTAL  
 HEALTH & ENGINEERING

SANITATION FACILITIES CONSTRUCTION  
 1700 CERRILLOS ROAD  
 SANTA FE, NM 87505  
 (505) 946-9570



Individual Water & Wastewater Facilities

San Ildefonso Pueblo  
 Construction Details Sheet 1  
 PUBLIC LAW 86-121  
 AL-23-C77 and AL-24-D33

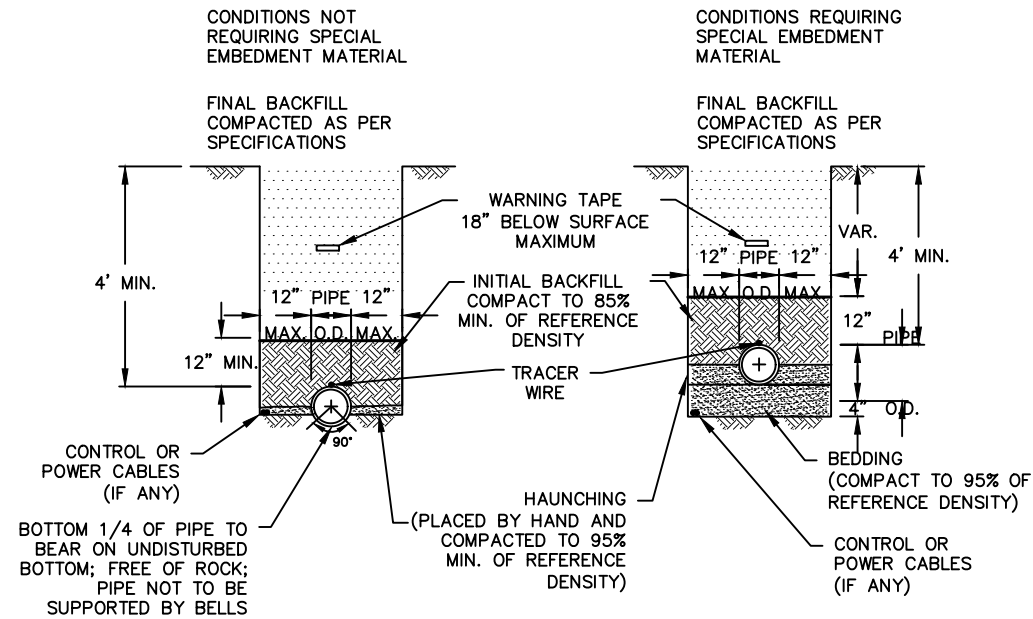
FILE NAME: I\_Slocum\_12-24  
 LAYOUT NAME: Construction Details  
 PROJ ENG: I\_Slocum SCALE: as\_noted

DRAWN BY: I\_Slocum\_12-24  
 CHECKED BY: \_\_\_\_\_  
 APPROVED BY: \_\_\_\_\_

# PIPELINE AND SEPTIC TANK DETAILS

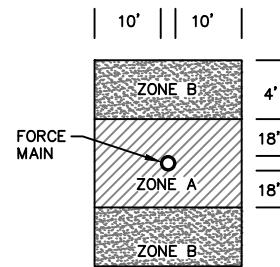
**NOTES:**

- SPECIAL IMPORTED BEDDING AND HAUNCHING MATERIAL SHALL MEET THE CRITERIA OF THE UNIFIED SOILS CLASSIFICATION SYSTEM FOR GW, GP, SW OR SP SOILS.
- ATTACH TRACER WIRE TO PIPE 3 TIMES PER 20' PIPE LENGTH, MINIMUM.
- TRACER WIRE IS REQUIRED ON WATER MAINS, WATER SERVICE LINES AND SEWER FORCE MAINS.

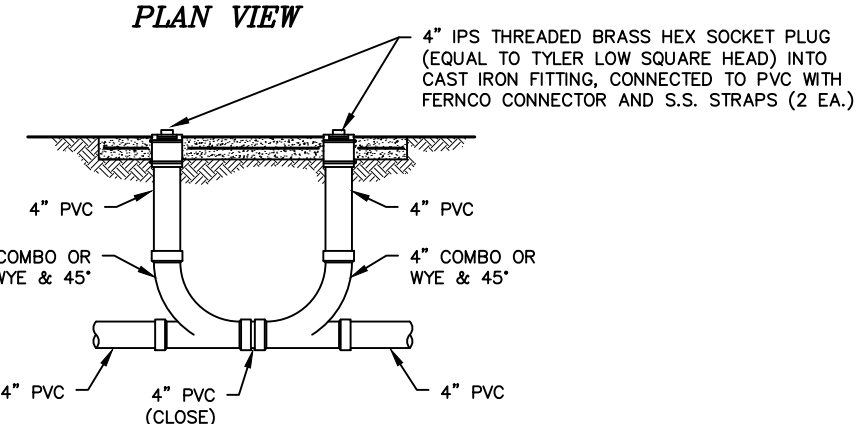
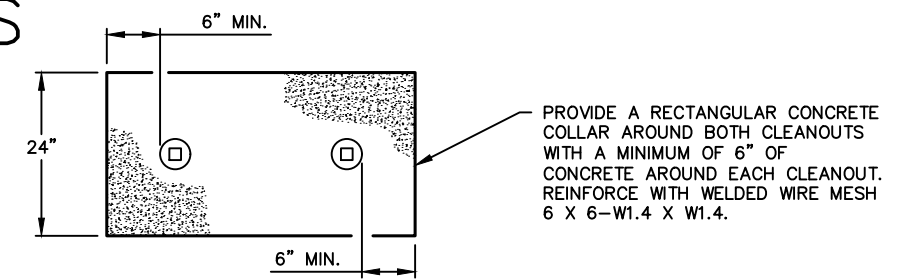


**1A TYPICAL TRENCH SECTION**  
NTS

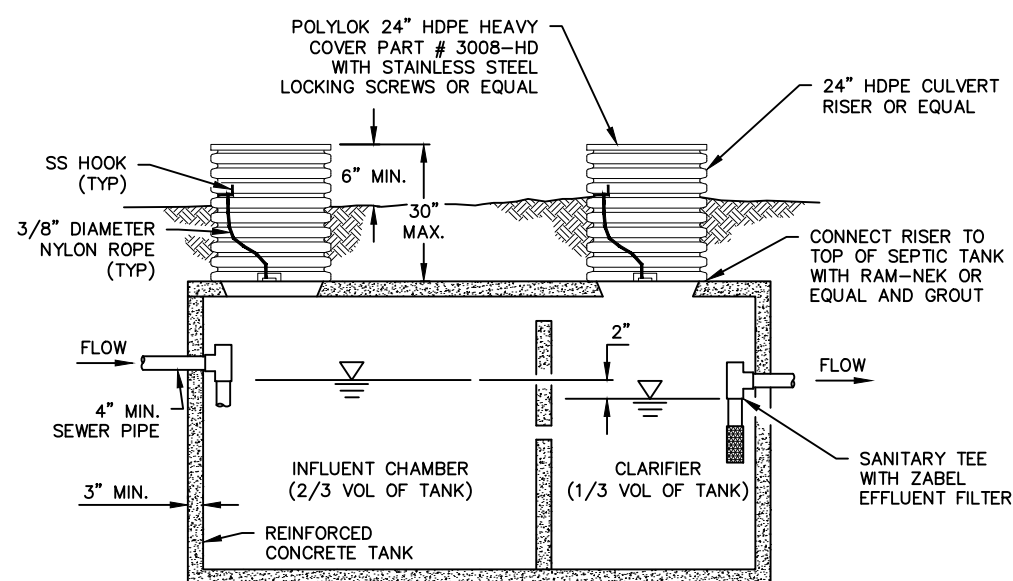
**NOTES:**  
ZONE A: NO WATER LINES ALLOWED, MINIMUM SEPARATION.  
ZONE B: EXTRA PROTECTION REQUIRED FOR WATER LINES.



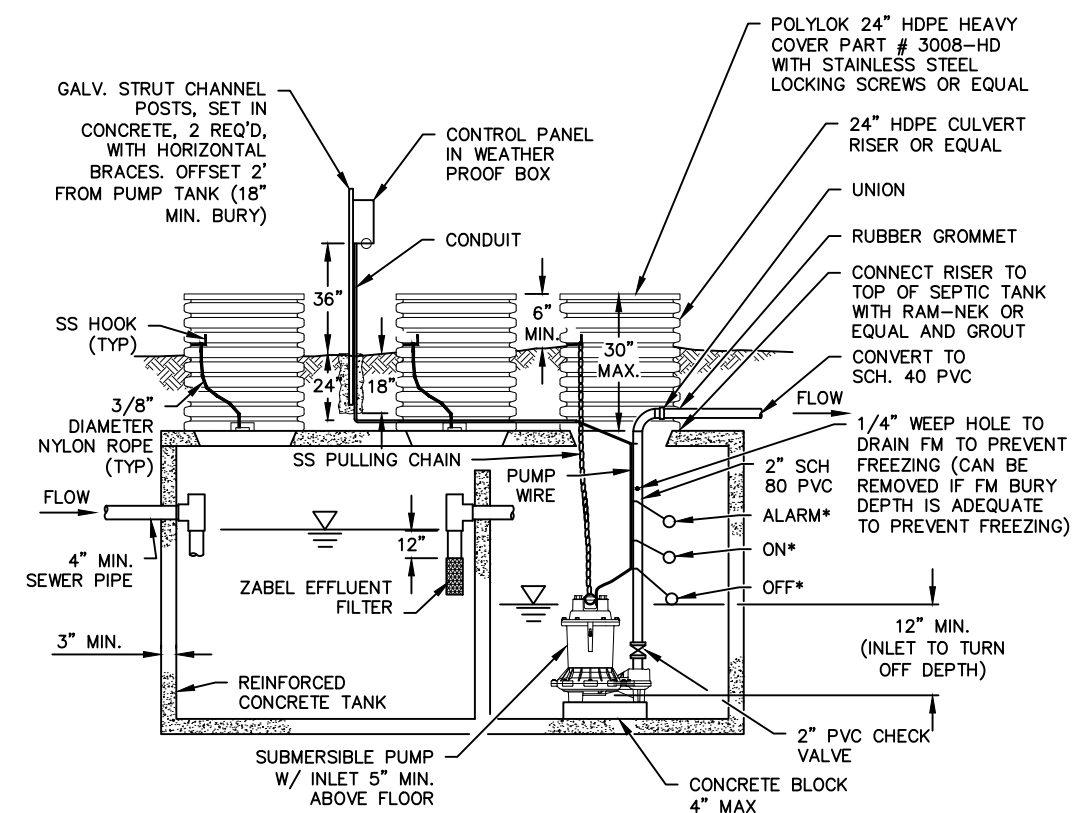
**4G WATER & SANITARY SEWER SEPARATION**  
NTS



**7A SEWER SERVICE LINE CLEANOUTS**  
NTS



**12A SEPTIC TANK**  
NTS  
(FOR SCHEDULE D)



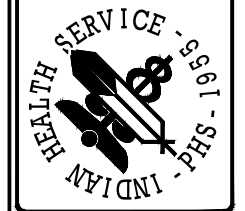
\* NOTE: FLOAT SETTINGS PER CONSTRUCTION DRAWING AND DOCUMENTS OR DETERMINED IN THE FIELD.

**13B COMBINATION SEPTIC & PUMP TANK**  
NTS  
(FOR SCHEDULE C)

NO.	DATE	REVISIONS

INDIAN HEALTH SERVICE  
OFFICE OF ENVIRONMENTAL  
HEALTH & ENGINEERING

SANITATION FACILITIES CONSTRUCTION  
1700 CERRILLOS ROAD  
SANTA FE, NM 87505  
(505) 946-9570



Individual Water & Wastewater Facilities

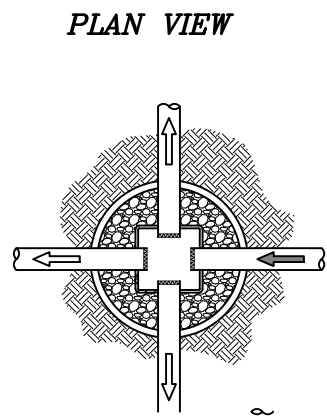
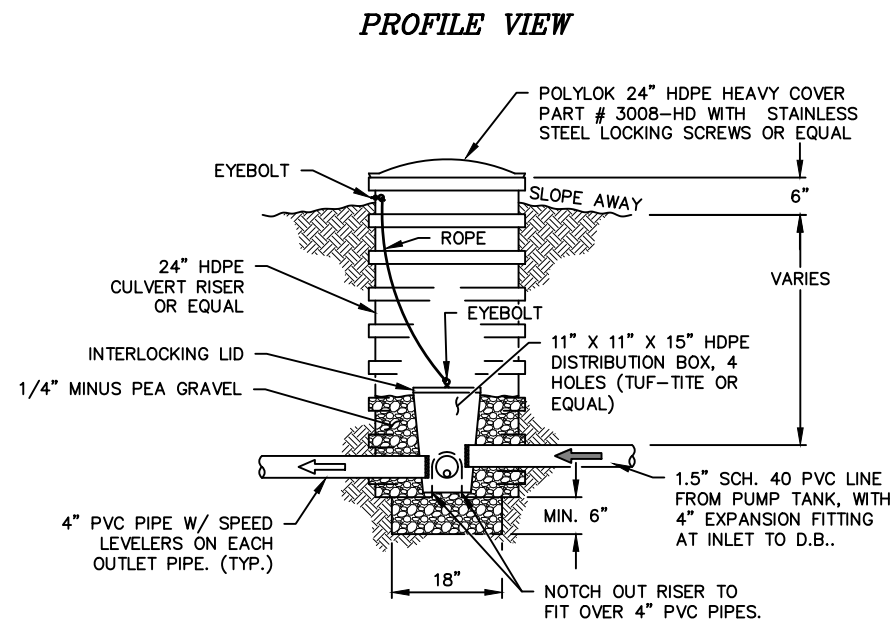
San Ildefonso Pueblo  
Construction Details Sheet 2  
PUBLIC LAW 86-121  
AL-23-C77 & AL-24-D33

FILE NAME: \_\_\_\_\_  
LAYOUT NAME: Construction Details Sheet 2  
SCALE: as noted

DRAWN BY: T. Slocum 12-24  
CHECKED BY: \_\_\_\_\_  
APPROVED BY: \_\_\_\_\_



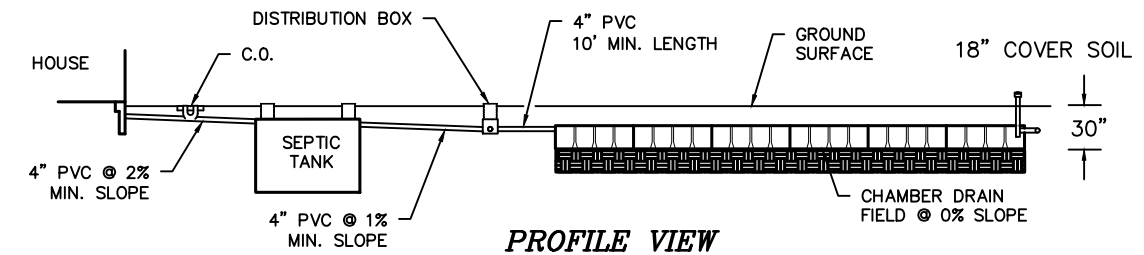
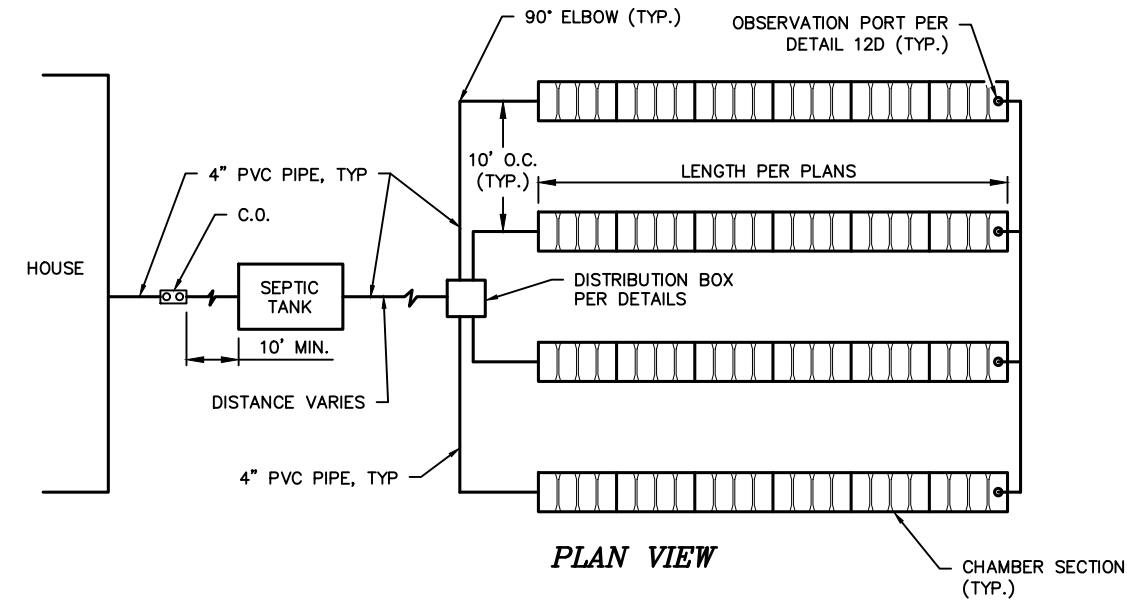
# DRAIN FIELD DETAILS



- NOTE:**
1. PROVIDE AT LEAST AS MANY OUTLETS AS THERE ARE DRAINFIELD LATERALS.
  2. CAP OFF OUTLETS THAT ARE NOT NEEDED.
  3. INSTALL A 1.5" TO 4" EXPANSION FITTING ON THE PUMP TANK EFFLUENT LINE AT INLET TO THE DISTRIBUTION BOX SO THAT FLOW TO THE CHAMBERS IS NON-PRESSURIZED.

12G1

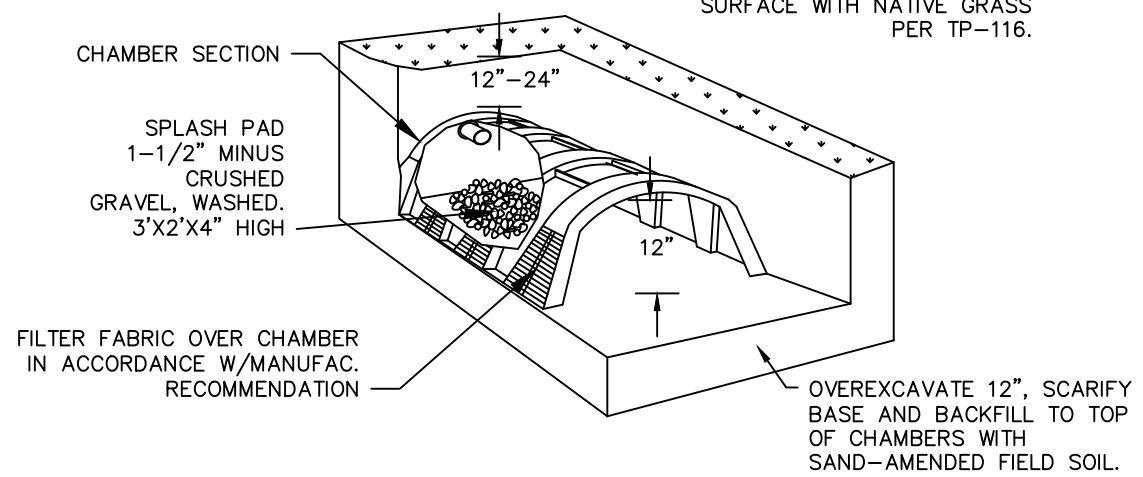
**HPDE DISTRIBUTION BOX AND 24" RISER DETAIL**  
NTS 3 OUTLET PIPES



12B

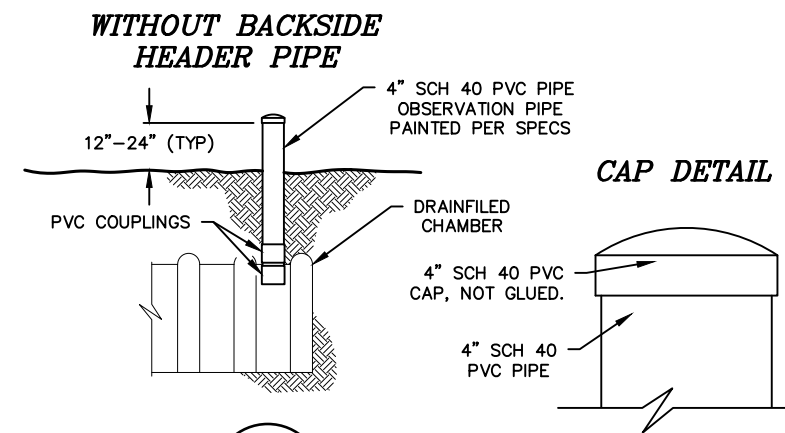
**CHAMBER DRAIN FIELD**  
NTS

CONSTRUCTION SHALL FOLLOW TP-1204.D. SEED FINAL SURFACE WITH NATIVE GRASS PER TP-116.



12C

**ISOMETRIC VIEW - CHAMBER DRAIN FIELD**  
NTS

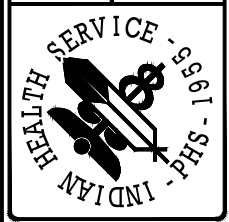


12H

**OBSERVATION PIPE**  
NTS

INIT.	DATE	REVISIONS

INDIAN HEALTH SERVICE  
OFFICE OF ENVIRONMENTAL  
HEALTH & ENGINEERING  
SANTATION FACILITIES CONSTRUCTION  
1700 CERRILLOS ROAD  
SANTA FE, NM 87505  
(505) 946-9570



Individual Water & Wastewater Facilities  
San Ildefonso Pueblo  
Construction Details Sheet 3  
PUBLIC LAW 96-24-D53  
AL-23-C77 & AL-24-D53  
DRAWN BY: I. Slocum 12-24  
CHECKED BY: \_\_\_\_\_  
APPROVED BY: \_\_\_\_\_  
FILE NAME: \_\_\_\_\_  
LAYOUT NAME: Construction Details  
PROJ ENG: I. Slocum SCALE: as noted