



Pueblo de San Ildefonso Bulletin July 2022

Inside this Issue

- Uplift of Fire Ban
- Fire Danger Sign
- Ponderosa Pine Seedling Replanting Project
- DECP Update
- Transfer Station
- Santiago Day 5K
- Healthy Kids Healthy Community
- UV Safety
- 988 Crisis Hotline
- Senior News
- ENIPC: Produce Distribution
- Employment Opportunities
- San Ildefonso Services, LLC Update



Council Meeting Dates

Friday, July 8, 2022 at 12 p.m.

Thursday, July 21, 2022 5:10 p.m.

Dates and Times are subject to change

Santiago Day

Santiago Day activities are currently being considered and the community will be notified in a different notice of what will be acceptable.

We will assess the Covid status and determine what kind of activities can be held with the safety of our community members in mind.

Internet Assistance

Effective July 1, 2022 the Internet Reimbursement has been extended until December 31, 2022. Reimbursement requests have been limited to a maximum of \$60. All future reimbursement requests will be processed and paid on the last week of each month.

For internet bills paid directly by the Pueblo, this program will end on December 31, 2022.

Office Closure

All Tribal Offices will be closed Monday, July 4, 2022 in observance of Independence Day.

Contact Us:

2 Tunyo Po, Santa Fe, NM 87506

Phone: (505) 455-2273

Fax: (505) 455-7351



**Pueblo de San Ildefonso
Natural Resources Department -Tribal Rangers Office**

JUNE 27, 2022

REGARDING: UPLIFT OF THE PUEBLOS FIRE BAN

EFFECTIVE JUNE 27, 2022, THE PUEBLOS FIRE BAN HAS BEEN UPLIFTED. DUE TO INCREASED MOISTURE, FORECASTED WEATHER, CURRENT FIRE DANGER RATING, AND AVAILABILITY OF FIREFIGHTING RESOURCES. WE REQUEST THAT IF YOU PLAN TO BURN WEEDS AND DEBRIS PILES ON YOUR PROPERTY YOU CONTACT THE TRIBAL RANGERS PRIOR TO IGNITING AND AFTER YOU BURN SO THAT THEY INFORM DISPATCH OF A CONTROLLED BURN.

THERE IS NO OPEN BURNING ALLOWED IN ALONG THE NATURAL BOSQUE AREA.

THERE HAS BEEN NO DECISION AT THIS TIME AS TO IF FIREWORKS WILL BE ALLOWED ON THE FOURTH OF JULY. A SEPARATE NOTICE WILL FOLLOW.

PLEASE CONTINUE TO BE CAUTIOUS, CREATE DEFENSIBLE SPACE BETWEEN YOUR PILES AND IGNITABLE FUELS, HAVE SHOVELS AND WATER READY AND COMPLETELY EXTINGUISH UNTIL COOL TO THE TOUCH AND CONTINUE TO MONITOR.

TRIBAL RANGERS

JOSE AGUILAR 505-219-7552

IAN FENDER 505-364-2672

GARY ROYBAL 505-238-6763.

TO REPORT A FIRE DIRECTLY: POJOAQUE DISPATCH 505-455-2295.

YOUR COOPERATION IS APPRECIATED, STAY SAFE AND FIREWISE.

THANK YOU,

TRIBAL RANGERS

Pueblo de San Ildefonso
Department of Natural Resources



Fire Danger Sign

The Pueblo received a Fire Danger Sign from BIA/NPA earlier in May which is placed at the Pueblos Shumaa Po entrance. The rating has been on EXTREME for some time, however with the recent and grateful monsoon precipitation and changes in conditions, we have recently changed the Fire Danger Sign to HIGH. Below is an explanation of the differences in Fire Danger Ratings for the northern Rio Grande Valley Zone. We will be coordinating updates with BIA/NPA and Santa Fe County Wildland Fire Officials.

Fire Danger Rating and Color Code	DESCRIPTION
Low (L) (Green)	Fuels do not ignite readily from small firebrands although a more intense heat source, such as lightning, may start fires in duff or punky wood. Fires in open cured grasslands may burn freely a few hours after rain, but woods fires spread slowly by creeping or smoldering, and burn in irregular fingers. There is little danger of spotting.
Moderate (M) (Blue)	Fires can start from most accidental causes but, except for lightning fires in some areas, the number of starts is generally low. Fires in open cured grasslands will burn briskly and spread rapidly on windy days. Timber fires spread slowly to moderately fast. The average fire is of moderate intensity, although heavy concentrations of fuel, especially draped fuel, may burn hot. Short-distance spotting may occur but is not persistent. Fires are not likely to become serious and their control is relatively easy.
High (H) (Yellow)	All fine dead fuels ignite readily, and fires start easily from most causes. Unattended brush and campfires are likely to escape. Fires spread rapidly, and short-distance spotting is common. High-intensity burning may develop on slopes or in concentrations of fine fuels. Fires may become serious and their control difficult unless they are attacked successfully while small.
Very High (VH) (Orange)	Fires start easily from all causes and, immediately after ignition, spread rapidly and increase quickly in intensity. Spot fires are a constant danger. Fires burning in light fuels may quickly develop high intensity characteristics such as long-distance spotting and fire whirlwinds when they burn into heavier fuels.
Extreme (E) (Red)	Fires start quickly, spread rapidly, and burn intensely. All fires are potentially serious. Development into high intensity burning will usually be faster and occur from smaller fires than in the very high fire danger class. Direct attack is rarely possible and may be dangerous except immediately after ignition. Fires that develop headway in heavy slash or in conifer stands may be unmanageable while the extreme burning condition lasts. Under these conditions the only effective and safe control action is on the flanks until the weather changes or the fuel supply lessens.

As always be Safe and Fire Wise.

Department of Natural Resources

Sacred Area-Ponderosa Pine Seedling Replanting Project 2022

Picture of Seedlings and *hoedads* (planting tools) prior to planting



Map of Project Area ~500 Seedlings planted into their historic range at Sacred Area



Santa Clara Pueblo Forestry donated the Pueblo with Ponderosa Pine seedlings in early April to aid the Pueblo's reforestation needs. These seedlings were transplanted into their historic range which has been impacted by wildland fire, insect, disease, drought, and overharvesting. Prior to beginning *Ah-gehn* respect by prayer was given as all is sacred. The intent of replanting is to promote a healthy ponderosa pine stand for future generations. As of today June 28, 2022, many of the seedlings ~70% have survived and are much healthier now thanks to some supplemental watering efforts and now gratefully to the recent and forecasted monsoon rains. Seedlings are susceptible to herbivory due to the rich nutritional value that elk and deer seek to browse upon. The Pueblo was fortunate to receive this donation and those that survive and grow into maturity will greatly be valued. The Pueblo and Natural Resources Department will continue to seek rangeland improvement projects that benefit native plant communities, wildlife habitat, and the water cycle, and that in return provide resources for tribal members. On your next visit out to Sacred Area, please be cautious of these seedlings and of where you walk, drive, and or park. Thanks to all that aided in this project.

Thank you,

Natural Resources Department

DECP UPDATE

ATTENTION FARMERS & GARDNERS

DECP is helping LANL seek local produce from farmer's in the community.

This includes with following:

Foodstuffs are collected on a triennial basis and include, but are not limited to:

- Domestic crops such as fruits, vegetables, legumes, nuts, and grains.
- Wild foods such as lambs quarter, purslane, prickly pear, and chokecherry.
- Animal products such as milk, honey, eggs, and meat.

Please bring the DECP and drop off with Raymond Martinez at the DECP office.

If you have questions, you may call Raymond at (505) 455-4127.

We want your apples,
cherries and pears, oh, my!



The primary goal of the Laboratory's Soil, Foodstuffs, and Biota Program is to determine whether Laboratory operations are affecting chemical concentrations in environmental media, such as soil, foodstuffs, plants, and animals, and to determine the impacts of these concentrations to human and environmental health. To accomplish these goals, samples are collected on a routine basis from on-site, perimeter (e.g. Los Alamos and White Rock), and background (> 15 km away from LANL) locations and comparisons of chemical concentrations are made among these locations. Environmental samples are routinely analyzed for radionuclides, metals, and/or organic chemicals such as PCBs, PFAS, dioxins, furans, and/or high explosives.

Foodstuffs are collected on a triennial basis and include, but are not limited to:

- Domestic crops such as fruits, vegetables, legumes, nuts, and grains.
- Wild foods such as lambs quarter, purslane, prickly pear, and chokecherry.
- Animal products such as milk, honey, eggs, and meat.

If you are interested in donating your locally grown or raised food, please contact us at SFB@lanl.gov. All of the analytical sample results are publicly available in the Intellus database. Additionally, results, interpretation, and discussion of these sampling results are available in the Los Alamos National Laboratory Annual Site Environmental Report.

• www.intellusnm.com





• www.lanl.gov/environment/environmental-report.php





Transfer Station News

JULY HOURS

SUN	MON	TUES	WED	THURS	FRI	SAT
TRANSFER STATION HOURS: THUR– MON 8:00am —5:00pm CLOSED: TUES & WED *Hours and closures are subject to change for holidays or at any time for many reasons.					1	2  Free Tire Day Buckman Recycling Santa Fe
3  Free Tire Day Buckman Recycling Santa Fe	4th of July OPEN 8am to 4pm	5 CLOSED	6 CLOSED	7 Senior Trash Pickup	8	9
10	11	12 CLOSED	13 CLOSED	14 Senior Trash Pickup	15	16
17	18	19 CLOSED	20 CLOSED	21 Senior Trash Pickup	22	23
24	25 Santiago Day Recycle!	26 CLOSED	27 CLOSED	28  World Nature Conservation Day Senior Trash Pickup	29	30
31 	Transfer Station Contacts: Erin Martinez, Transfer Station Supervisor—(505) 455-4121 Roberta Trujillo, Transfer Station Attendant—(505) 250-8297					



Thank you!

Thank you to

Eva Moquino and
Elvis Torres

for participating in the
World Environment Day
Recycling challenge. Each
participant received a
beautiful hanging plant

KEEP RECYCLING!!



Thank you to the Anonymous
donor for the plants.

Senior Trash Pick-Up

Seniors

Please remember to follow all guidelines for
Trash Pick up services. If you are in violation
of any guideline(s), your trash will not be
picked up for the day.

- (3) Bag limit for each Senior household listed
- Dogs must be in house or on leash. If dogs are present, bags will NOT be picked up.
- Bags MUST be tied. UNTIED and TORN bags will NOT be picked up.
- Bags must be visible

Any Seniors that meet the requirements for
the service are encouraged to fill out a form
and submit to the Transfer Station to be
added to the list.



Please Dispose Trash Properly in appropriate bins



- Bagged Household Waste = **GREEN** Compactor Bin
- Recyclables = **WHITE** Recycle Bin
 - No glass items, No trash, No food !!
 - If you have your recyclables a plastic bag please dump items out in bin. If you need a list of what is recyclable and what is not accepted, please stop by for one.
- Metals = **GREY** Metal Bin
- Weeds and branches = Please dispose below the bins at the bottom of the hill. Please DO NOT mix trash with weeds or branches.
- We DO NOT accept OIL or TIRES

RECYCLING BAGS ARE AVAILABLE

Recycling bags are now available and can be picked up at the Transfer Station.

REMINDER

Please EMPTY bag(s) into Recycling bin.
DO NOT THROW BAG IN BIN



SHARPS DROP OFF BOX

IS NOW AVAILABLE AT THE TRANSFER STATION



Safely dispose ALL sharps

Used needles & all sharps are dangerous to the Community & pets, if not disposed safely

DO NOT THROW SHARPS IN YOUR HOUSEHOLD TRASH BIN.

Please place in plastic container and drop off in Sharps Drop Box located at Transfer Station.

EXAMPLES:

- Needles
- Syringes
- Lancets U
- Used Auto Injectors

JULY 28TH

WORLD NATURE CONSERVATION DAY

“The Earth is what we all have in common.”



HOW TO CONSERVE?

- Opt for reusable straws and water bottles
- Start a sustainable diet.
- Ditch single-use plastic at home.
- Think energy-efficient appliances.
- Start your compost.
- Make a bird feeder.



PUEBLO DE SAN ILDEFONSO
HEALTH & HUMAN SERVICES

5K JULY 25 SANTIAGO DAY

SIGN-IN
BEGINS @
6:15
AM



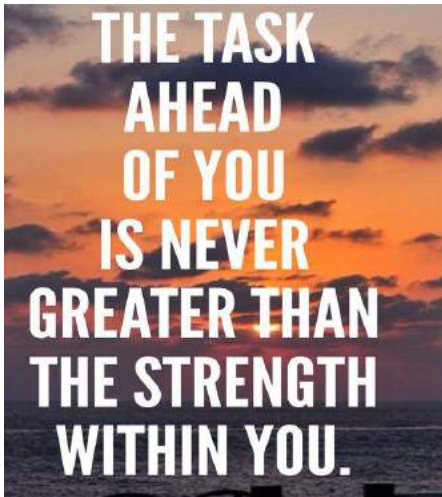
5K RUN & 1 MILE FUN RUN/WALK
MEET UNDER THE BIG TREE 5K begins @ 6:30AM

Open to all!
Incentives for all participants!
Prizes for 1st-3rd!



FOR QUESTIONS, CALL (505) 252-4008





National Grilling Month

Recipe Courtesy of Food Network Kitchen

Spiced Chicken & Grape Skewers

Ingredients:

- 2 tablespoons Olive Oil
- ½ teaspoon Lemon Zest
- 1 tablespoon Lemon Juice
- 2 Cloves Garlic, minced
- 1 teaspoon Ground cumin
- ½ teaspoon ground coriander
- ½ teaspoon salt
- 1 lb. boneless skinless chicken breast, cut into ¼ inch cubes
- 8(10inch) skewers
- 1 ½ cups seedless green grapes
- Cooking spray
- 2 tablespoons chopped fresh mint leaves
- 1 lemon, cut into wedges



1. In medium sized bowl whisk together the oil, lemon zest, lemon juice, cumin, coriander, and salt. Add the chicken to the marinade and toss to coat. Marinate the chicken for 20 minutes. While the chicken is marinating, soak the skewers in water if wooden.
2. Thread 4 pieces of the chicken and 4 grapes onto the skewers, alternating them. Spray a grill pan with cooking spray and preheat over medium-high heat, or prepare an outdoor grill. Grill chicken until cooked through, about 3 to 4 minutes per side. Sprinkle with mint and serve with lemon wedges.

Hot Plums & Berries

Recipe Courtesy of Food Network Kitchen



Mix 4 tablespoons melted butter, 2 tablespoons sliced crystallized ginger and 3 tablespoons in a large bowl; toss with 3 to 4 halved pitted plums. Place the fruit, cut-side up on a sheet of foil; scatter 1 cup raspberries and/or blackberries on top. Fold up the packet and grill over medium-high heat until the plums are tender and the berries are juicy, 15 to 20 minutes. Serve with ice cream or yogurt.

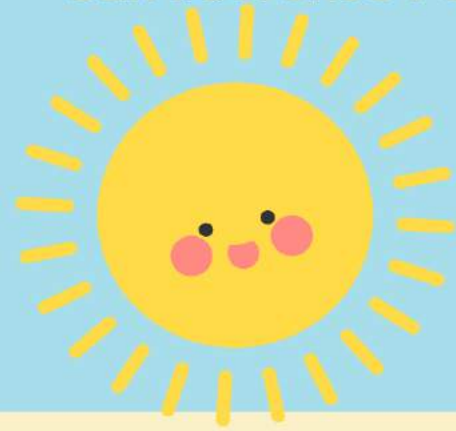
Let's keep track of our daily steps each day

Sun	Mon	Tue	Wed	Thurs	Fri	Sat
HAPPY 4th JULY					1	2
3	4	5	6	7	8	9
10	11	12	13	14	15	16
17	18	19	20	21	22	23
24	25	26	27	28	29	30
31	Mark your calendar - July 25th Santiago Day 5K Run, 1-mile Fun Run/Walk/Bike Sign-in: 6:15am 5K Start: 6:30am 1-mile Start: 6:45am = Start & Finish at the Big Tree =					

Healthy Kids Healthy Community
San Ildefonso Pueblo

vmartinez@sanipueblo.org 505-252-4008





UV SAFETY

LADAWN YAZZIE, MPH, TRIBAL PUBLIC HEALTH EDUCATOR



Health professionals continue to educate the public about the importance of protecting your skin from the side effects of UltraViolet (UV) rays. This month we start a conversation about how we can limit exposure to UV light and reduce the chances of getting skin cancer.

An individual who is exposed to natural or artificial UV rays for a long time can develop skin cancer. The most common are melanoma, basal cell, and squamous cell cancers. Others who are exposed to UV rays can experience premature aging, and the signs of skin damage include leathery skin, liver spots, wrinkles, and solar elastosis.

Below are things you can do to minimize your risk of sun exposure.

✓ USE SUNSCREEN

SPF 30 or higher, 20 minutes before sun exposure. Reapply every 2 hours.



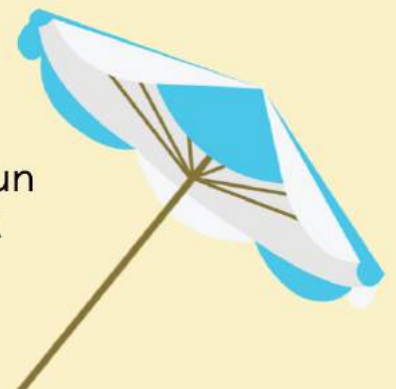
✓ COVER UP

Wear proper clothing such as pants, long-sleeved shirts, a hat, sunglasses, and a broad-brimmed hat to provide better protection.



✓ STAY IN THE SHADE

Reduce UV radiation by taking shelter under a tree, umbrella, or another shady spot. Midday sun is intense, so stay in the shade from 10 a.m. to 4 p.m.



COMING

July 16, 2022

Reasons to call 988:

Worried about your safety
or someone you know?


Feeling hopeless,
confused, or angry?

Need information or referrals for
local community services?



Follow Us!

 988 NM Crisis Support

 988nmcrisissupport

<https://988nm.org/>



Senior News



Senior Activities

July 1 starts a new budget period, which means Seniors can start planning for activities.

A suggestion is that Seniors attend an Isotopes game with a maximum of 12 people including the driver. There are three dates that have a start time of either 12 pm (noon) or 1 pm which would give Seniors time to drive down in the Senior bus, enjoy the game, and come back. If Seniors decide on a night game starting at 6 pm Seniors would be driving in the dark.

There is an internet survey where seniors can vote on whether they want to go to an isotopes game and if so, select a date to go. There will also be a section to suggest activities.

Here is the survey link: <https://www.surveio.com/survey/d/S6K0B0L3H1Q9L9W4K>

If you can not get on the internet, please call Stuart Christian at (505)455-4105 and give him your responses.

The maximum who can go on the activity, if it's an isotope game, is 12 including the driver. If more than 12 Seniors want to go, random selection will be used. More Seniors are welcome to go to the game at the same time but they will have to drive and pay on their own. Notice will be sent out later in July as to whether or not there was enough interest and Seniors can sign up at that time. If there is not enough interest, another activity will be selected.

.....

Senior Meeting

Next Senior meeting will be on July 20, 2022 at 10:30 am and will be held at the Senior Center. During this meeting there will be an election for President, Vice-President and Secretary. Below is the agenda for this meeting.

Call meeting to Order, Invocation by Invite, Notes of last meeting— May 18, 2022

Presentation (s) if any

Nominations for President, Vice President, Secretary

Election

Survey results on fairness and budget constraints

Bingo (equipment use by others)

Inventory of equipment

Discussion of Activities

Concerns by seniors

Benediction by invite

https://us02web.zoom.us/j/83954243646?pwd=mnMoBw9_bdLk-WMt9Iz3Rv1Ipm8Aa3.1

Meeting ID: 839 5424 3646

Passcode: 847330



**PRODUCE
DISTRIBUTION
FOR EIGHT NORTHERN
PUEBLOS**

**JULY 13, 2022
8:00 AM – 6:00 PM**

**SANTA CLARAN
EVENT CENTER
460 N RIVERSIDE DRIVE
ESPAÑOLA, NM**





Vacancy Announcement

Excellent Career and Benefits Opportunities

Come and Join our Team!

Full Time Positions offers a wide range of excellent fringe benefits:

- Healthcare (medical, dental, vision, & prescription drugs)
- Paid Time Off (PTO)
- Holiday Pay
- Basic Life Insurance
- Life and AD&D Insurance
- Short-term Disability
- On-the-job training and skills development
- Employee Assistance Program
- 401K Plan

Pueblo de San Ildefonso is seeking qualified applicants for the following Full-Time Positions:

Assistant Controller (Full-Time) Deadline to Apply: Opened Until Filled

Environmental Specialist (Full-Time) Deadline to Apply: Opened Until Filled

IT Network Management Specialist (Full-Time) Deadline to Apply: Opened Until Filled

Transfer Station Attendant (Full-Time) Deadline to Apply: July 12, 2022

Driver for Senior Outings at needed

Native American Preference

Contact Human Resources at 455 - 4155 for Job Description or for more information.

Employment Applications are available on site or on the website at

www.sanipueblo.org/jobs

June 15, 2022

JOB OPENING ANNOUNCEMENT DIRECTOR-SAN ILDEFONSO HOUSING AUTHORITY

The new San Ildefonso Housing Authority is looking for an experienced Director.

The Executive Director is responsible for the overall management of the San Ildefonso Housing Authority (SIHA) in accordance with HUD/NAHASDA Regulations and the Ordinance, Policies, and Procedures of the Authority. Reporting to the SIHA Board of Commissioners, job responsibilities include developing housing plans, policies, procedures, and programs; preparing and managing budgets; raising funds; administering federally-compliant procurement and contract administration activities; hiring qualified staff support, maintaining good working relations with client groups, and overseeing personnel in charge of financial and housing management operations.

The Pueblo is looking for a highly driven, self-directed, results-oriented early- to mid-career Indian Housing Specialist with a minimum of three years of direct, hands-on senior executive experience and demonstrable achievements in two or more of the following areas:

- CEO or Executive Director with a results-oriented housing-related organization;
- Indian or Public Housing Authority or federal agency annual plan development or related planning experience;
- Indian or Public Housing Authority or federal agency housing management involving knowledge of the Native American Housing Assistance and Self-Determination Act (NAHASDA) regulations or related management experience;
- Employment with a federal agency, HUD preferred, involving detailed knowledge of federal grants program design and implementation requirements involving budgets and funds management, administering procurement and contract administration activities, and/or developing policies, procedures, and programs;
- New housing or housing rehabilitation project development responsibility over \$1 million;
- Responsibility for \$1 million or more in annual public or private fund development.

Proposed salary: \$33.65/hr. - \$70,000 annual plus benefits.

How to Apply:

Please send a resume and three references by July 15 to:

Darien Cabral
San Ildefonso Housing Authority
Deputy Director
darien@sanihousing.org
505-670-2086
505-416-6829

A complete job description and information on compensation is available upon request.

Indian preference hiring



**SEEKING NOMINEES FOR A GOVERNOR - APPOINTED
MEMBER'S REPRESENTATIVE
FOR SAN ILDEFONSO SERVICES, LLC,
A TRIBALLY OWNED SMALL BUSINESS**

June 27, 2022

OVERVIEW

1. Summary of Responsibilities

Under restructured Articles of Organization, the Pueblo de San Ildefonso Governor is seeking a Member's Representative to serve in a professional capacity to provide leadership experience stemming from business, government, private or nonprofit sector work. Key in a Member's Representative is also a commitment to, and understanding of, the needs of the Pueblo community, Pueblo sovereignty and laws of the Pueblo.

The Member's Representative provides general oversight and monitoring of SIS LLC on behalf of the Pueblo de San Ildefonso, who is the sole Member of the LLC. The Member's Representative shall act in accordance with the authority and responsibilities set forth in the SIS Articles of Organization. The Member's Representative shall monitor the LLC as an asset of the Pueblo and shall act in the best interests of the Pueblo in fulfilling responsibilities. The Member's Representative does not exercise day-to-day management of, or control over, SIS or its business activities. The Member's Representative shall serve as the primary point of contact between the LLC and the Member and shall facilitate communications between the two. The Members' Representative shall receive compensation at the sole discretion of the Tribal Council in accordance with tribal law.

A detailed Position Description is available. The Position Description identifies the Job Summary; Appointment, Supervision and Removal; Essential Functions; and Minimum Qualifications.

2. Nomination Timeline and Process

The Nomination period for this 5 ½ Month term position which opens on June 27, 2022 and closes on July 8, 2022, 5:00 p.m. Nominees must provide a Letter of Interest and a Resume.

The person selected will have the potential to carry over into a new three year term, beginning January 1, 2023.

Nominations may be sent or delivered to: Pueblo de San Ildefonso, Governors Office, ATTN: SIS Nominations, 02 Tunyo Po, Santa Fe, NM 87506. The Governors Office can be reached at (505) 455-4101 or email the Executive Assistant to the Governor at governorsassistant@sanipueblo.com.



POSITION: Member's Representative
COMPENSTION: TBD

LOCATION: Pueblo de San Ildefonso
REPORTS TO: Tribal Council

JOB SUMMARY

The Member's Representative provides general oversight and monitoring of San Ildefonso Services, LLC (SIS) on behalf of the Pueblo de San Ildefonso, who is the sole Member of the LLC. The Member's Representative shall act in accordance with the authority and responsibilities set forth in the SIS Articles of Organization. The Member's Representative shall monitor the LLC as an asset of the Pueblo and shall act in the best interests of the Pueblo in fulfilling his/her responsibilities. The Member's Representative does not exercise day-to-day management of or control over SIS or its business activities.

The Member's Representative shall serve as the primary point of contact between the LLC and the Member and shall facilitate communications between the two.

The Member's Representative shall receive compensation at the sole discretion of the Tribal Council in accordance with tribal law.

APPOINTMENT, SUPERVISION AND REMOVAL

The Member's Representative is appointed pursuant to the process set forth in the SIS Articles of Organization. The Member's Representative is subject to the supervision of the Tribal Council. The Member's Representative is subject to removal by the Tribal Council or the Governor pursuant to the process set forth in the SIS Articles of Organization.

ESSENTIAL FUNCTIONS

The Member's Representative's oversight and monitoring duties include, but are not limited to, providing assistance with SIS's planning, policy development and proposed legislative initiatives, and overseeing SIS's budgets, business plans, feasibility studies, and marketing studies.

A meeting of the Member's Representatives will be held annually, on the second Tuesday in June, or as otherwise scheduled by the Member's Representatives, for the purpose of electing the Manager of SIS; approving SIS's annual business plan and budget; and transacting any business that may come before the Member's Representatives at such annual meeting.

The Member's Representatives will meet with the SIS Manager no less frequently than on a quarterly basis to receive reports on, including but not limited to, SIS's financial and operating condition. Additionally, on an annual basis, the Member's Representative will receive reports from SIS Manager concerning the preceding year's financial statement and the upcoming year's financial forecast. The Member's Representative will promptly submit all such reports to the Tribal Council and Governor.



MINIMUM QUALIFICATIONS

Each person appointed as a Member's Representative shall possess a level of professional experience and expertise necessary to carry out the requisite duties of a Member's Representative and contribute to the ability of SIS to achieve its purpose.

A Member's Representative shall possess the following qualifications:

1. Extensive professional and leadership experience in business, government, or the nonprofit sector;
2. A commitment to and understanding of the needs of the Pueblo community, Pueblo sovereignty, and the laws of the Pueblo;
3. Integrity, credibility, and a passion for the Pueblo's economic development activities;
4. Demonstrated ability to oversee a business for maximum profitability and performance, including fiscal goals and priorities, and operational procedures and guidelines;
5. A High School Diploma is required;
6. A Bachelor's Degree in business administration, marketing, retail management, finance, or a related degree is preferred;
7. Five plus years of experience in business, finance, government, and/or related management experience is preferred;
8. A combination of education and experience may be considered in meeting the requirements of numbers 6 and 7 above;
9. Must pass a background check and successfully complete an alcohol and drug test prior to appointment; and remain subject random drug testing throughout term;
10. Must have the ability to obtain special clearances and background investigations (per project requirement basis);
11. No person who has been convicted of a felony within the last five (5) years shall be appointed as a Member's Representative. A felony is a crime punishable by at least one (1) year in jail, regardless of whether the person actually served a full year in jail; and
12. No person who has ever been convicted of a crime involving theft or conversion of money or property shall be appointed as a Member's Representative.

DOCUMENT SUBMISSION

For consideration, please submit 1) a letter of intent, and 2) resume to the Pueblo de San Ildefonso Governor's Office, by **Friday, July 8, 2022, before 5:00pm**. Late submissions will not be considered.



San Ildefonso Services, LLC *Tribally Owned Small Business*

Mailing Address: 3005 S. St. Francis Dr., Suite 1D, #222, Santa Fe NM 87505-7004 ♦ Office/(505) 455-1941



Totavi Tewa Market & Fuel Announces Installation of Fuel Dispensers

Totavi Tewa Market & Fuel announced the installation of New Bennet Fuel Dispensers, giving our customers the latest generation of Fuel Pump Technology. With our new Bennet Fuel Dispensers, we look forward to providing our customers with the latest Global Standard in EMV, or chip-card technology, which encrypts credit and debit card data from the cardholder during a transaction. The New Pumps will also contribute to less maintenance and down time. In Addition, Tewa Market & Fuel customers will now be able to use Apple Pay, Google Pay and Tap to Pay at the Pumps.

Customers Nationwide have enjoyed Bennet Products since 1919. The BENNET PACIFIC eNVY is a Fuel Dispenser with efficiencies in mind. With 60 percent less energy consumption versus all competitors, they are a benefit to our bottom line and the environment. Bennett's SB100 meter is the Fuel Dispenser Industry's most accurate meter, providing Tewa Market and Fuel and its customers with peace-of-mind and years of trouble-free performance. PACIFIC eNVY also offers NFC (Near-Field Communication) which is a contact-less payment which works through a set of communication protocols that allow payment via NFC mobile apps such as Android Pay, Apple Pay and any NFC enabled payment card Visa payWave, MasterCard paypass.